



One The Elephant, 1 St. Gabriel Walk, SE1 6FB

Price:

£ 3,200 /pcm

One The Elephant, 1 St. Gabriel Walk, SE1 6FB

Price: £ 3,200 /pcm2 bedroom house

[View Property](#)

OVERVIEW

Available August.

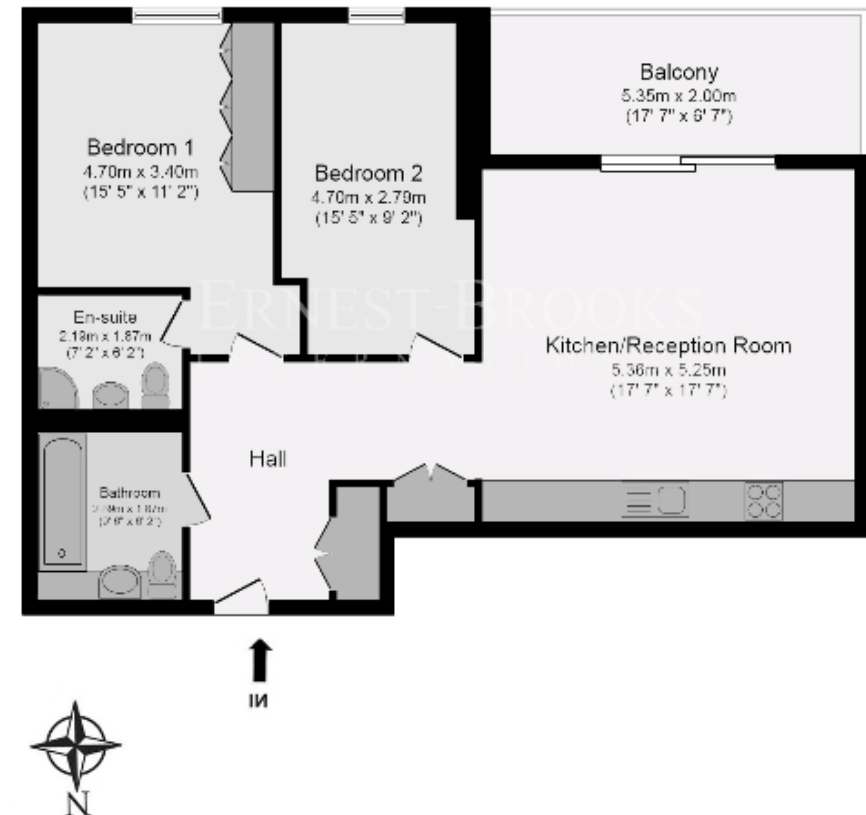
Ideally located close to the station is this two-bedroom apartment on an upper floor of One The Elephant, SE1.

KEY FEATURES

- Available August
- Upper floor
- Corner unit
- Private balcony
- Offered fully furnished
- Underfloor heating
- Concierge service
- Residents lounge
- 3 minute walk to Elephant & Castle station

One The Elephant

ERNEST-BROOKS
INTERNATIONAL



Total floor area 76.3 sq.m. (823 sq.ft.) approx

Whilst every attempt has been made to ensure the accuracy of the floor plan contained here, measurements of doors, windows, rooms and any other items are approximated and no responsibility is taken for any error, omission or mis-statement. This plan is for illustrative purposes only and should be used as such by prospective purchaser. The service, system and appliances shown have not been tested and no guarantee as to their operability or efficiency can be given.

