

One Thames Quay, 222 Marsh Wall, E14 9EN

Price:
£ 650,000

One Thames Quay, 222 Marsh Wall, E14 9EN

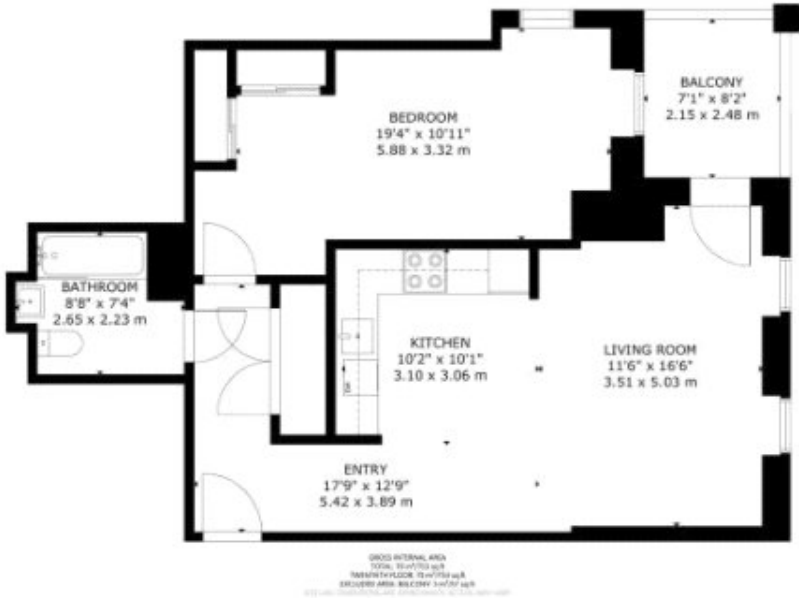
Price: £ 650,000 1 bedroom house

[View Property](#)

OVERVIEW

Step into elevated living with this brand-new one-bedroom apartment at One Thames Quay, a striking 48-storey landmark just moments from Canary Wharf. The property boasts a double bedroom with a fitted wardrobe, a bright open-plan living and dining area with a fully integrated kitchen, and a contemporary bathroom. Expansive floor-to-ceiling windows frame stunning views over Canary Wharf and the River Thames.

Residents benefit from an exceptional range of private amenities, including a 24-hour concierge, multi-level landscaped gardens, a private bowling alley and cinema, a residents' lounge on the 46th floor, a sky gym, and two landscaped roof terraces.



Energy Performance Certificates

KEY FEATURES

- One-bedroom apartment in the 48-storey One Thames Quay
- Floor-to-ceiling windows with stunning River Thames & Canary Wharf views
- Bright open-plan living/dining area with fully integrated kitchen
- Double bedroom with fitted wardrobe and contemporary bathroom
- 24-hour concierge and multi-level landscaped gardens
- Exclusive resident amenities: bowling alley, cinema, 46th-floor lounge
- Sky gym and two landscaped roof terraces
- Prime E14 location close to Canary Wharf, DLR, Jubilee, and Elizabeth Line

Score	Energy rating	Current	Potential
92+	A		
81-91	B	84 B	84 B
69-80	C		
55-68	D		
39-54	E		
21-38	F		
1-20	G		

