



One Park Drive, Canary Wharf, E14 9SB

Price:

£ 1,460,000

One Park Drive, Canary Wharf, E14 9SB

Price: £ 1,460,000 2 bedroom house

[View Property](#)

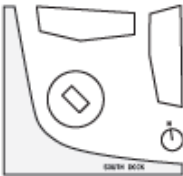
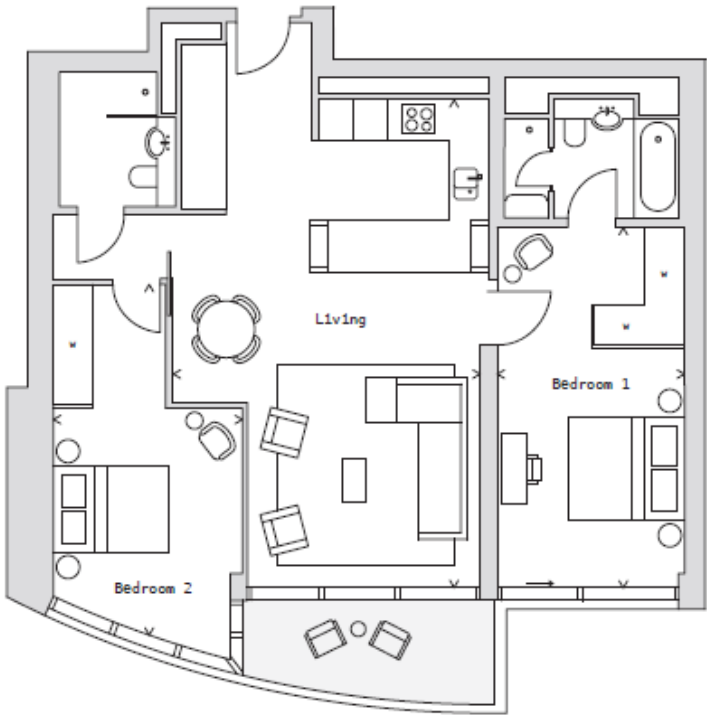
OVERVIEW

Superbly positioned 40th floor two bedroom apartment, situated in Canary Wharf's premier development, One Park Drive. Spread across a more than generous 1081 sqft, with its own private terrace, this property offers spectacular views.

The spiralling top of the building includes the Bay apartments. At these levels the orthogonal geometry of the apartment planning interfaces with the implicit curved form of the building creating the opportunity for double height balconies with exceptional views.

KEY FEATURES

- Swimming Pool



DATA	IMPERIAL	METRIC
Apartment	1081 sq ft	100.4 sq m
Terrace	76 sq ft	7.1 sq m
Living	27' 10" x 17' 06"	8.49 x 5.33 m
Bedroom 1	20' 09" x 10' 08"	6.33 x 3.25 m
Bedroom 2	19' 02" x 10' 09"	5.81 x 3.28 m

