



Old School Square, Poplar, E14 7DJ

Price:
£ 425,000

Old School Square, Poplar, E14 7DJ

Price: £ 425,000 2 bedroom house

[View Property](#)

OVERVIEW

A truly exceptional two-bedroom mezzanine home set within the striking Victorian conversion of Old School Square, E14.

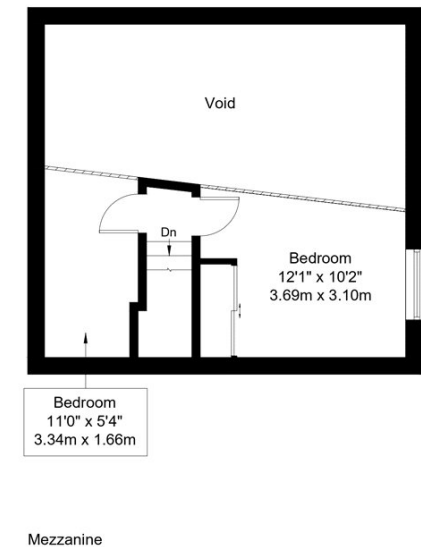
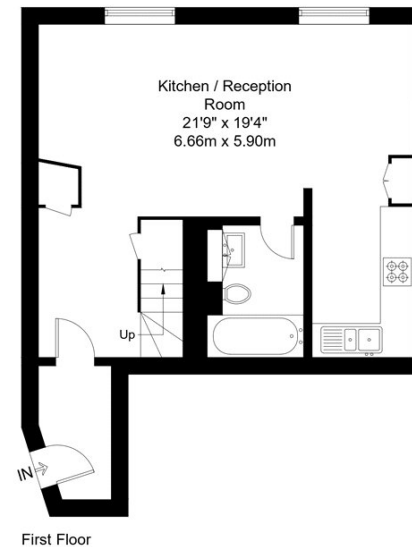
Blending historic character with contemporary design, this rare apartment offers a unique living experience moments from the City and Canary Wharf.

KEY FEATURES

- Stunning Victorian school conversion with unique character
- Bright double-height reception with impressive feature windows
- Stylish semi-open-plan modern kitchen with fitted appliances
- Mezzanine layout providing two well-proportioned bedrooms
- Contemporary bathroom on first floor with useful storage
- Chain-free purchase opportunity for a smooth transaction
- Short walk to Westferry DLR for City and Wharf connections
- Close to cafu00e9s, shops, bars and local lifestyle amenities

Old School Square, E14

Approx Gross Internal Area = 62.8 sq m / 676 sq ft



The Floor plan is not to scale and measurements and areas shown are approximate and therefore should be used for illustrative purposes only. The plan has been prepared in accordance with the RICS code of Measuring Practice and whilst we have confidence in the information produced it must not be relied on. Maximum lengths and widths are represented on the floor plan. If there is any aspect of particular importance, you should carry out or commission your own inspection of the property.
Copyright © BleuPlan

