

The EBI logo is located in the top right corner of the image. It consists of the letters 'EBI' in a white, serif font, centered within a dark blue square. The square has thin white horizontal lines above and below the text.A large, semi-transparent watermark of the EBI logo is centered in the middle of the image. It features the letters 'EBI' in a light blue, serif font, with thin blue horizontal lines above and below the text.

Offa Road, TN35 5HR

Price:

£ 1,500 /pcm

Offa Road, TN35 5HR

Price: £ 1,500 /pcm3 bedroom house

[View Property](#)

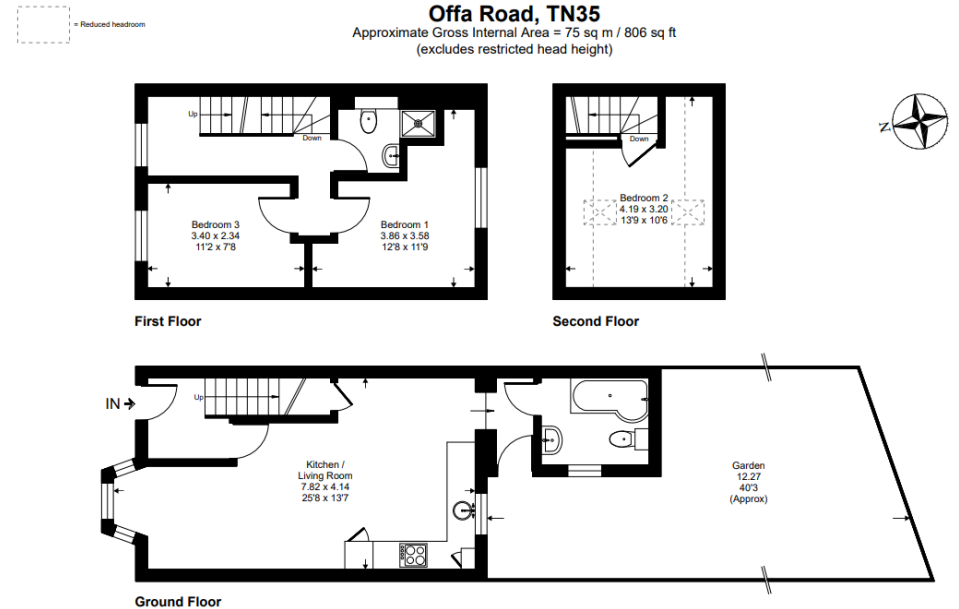
OVERVIEW

Rare to market! Three double bedroom, two bathroom & underfloor heating. Luxurious & stylish throughout, finished to a very high standard. Offered fully furnished to a high standard. This terraced house from a very high finish developer tenants rarely leave after they enter!

The property offers bright accommodation throughout and comprises of a large entrance hallway, living room with bay fronted window, newly fitted open plan kitchen with integrated Smeg appliances oven/hob, a ground floor bathroom with underfloor heating & shower over bath. On the first floor there are two double bedrooms with a second installed brand new bathroom boasting underfloor heating, LED backlight mirrors and flush modern appliances with a walk in shower. Up the stairs on the second floor you will find the third bedroom spanning the whole floorplate of the house with two Velux skylights flooding the room with natural light.

KEY FEATURES

- Three bedroom
- Two bathroom
- Recently renovated throughout
- On road parking
- Underfloor heating
- High specification finish throughout
- Viewings welcome by appointment



This floor plan is for representation purposes only as defined by the RICS code of Measuring Practice (and IPMS where requested) and should be used as such by any prospective purchaser. Whilst every attempt has been made to ensure the accuracy contained here, the measurement of doors, windows and rooms is approximate and no responsibility is taken for any error, omission or mis-statement. Specifically no guarantee is given on the total area of the property if quoted on the plan. Any figure provided is for guidance only and should not be used for valuation purposes.

Copyright Casaphoto Ltd. 2024 - Produced for Ernest Brooks

