



Oakley House, 10 Electric Boulevard, SW11 8BS

Price:

£ 495,000

Oakley House, 10 Electric Boulevard, SW11 8BS

Price: £ 495,000

[View Property](#)

OVERVIEW

A beautifully presented studio apartment located within the iconic Battersea Power Station development, offering exceptional finish and generous private winter garden.

This well-designed apartment features an open-plan living and dining area with a sleek, fully integrated kitchen, leading directly onto a spacious winter garden, perfect for relaxing or entertaining year-round. The bedroom space includes a built-in wardrobe, dedicated dressing area, and access to a contemporary bathroom, all finished to a high specification. Ample storage is provided throughout.

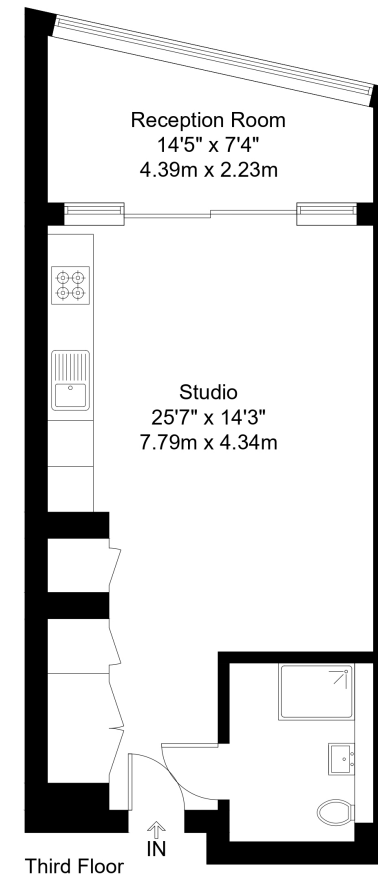
KEY FEATURES

- Studio apartment within the iconic Battersea Power Station development
- Generous private winter garden ideal for year-round use
- Sleek open-plan living area with integrated kitchen
- High-quality fixtures and finishes throughout
- Built-in wardrobe and dedicated dressing area
- Contemporary bathroom with premium fittings
- Access to residents' facilities including 24-hour concierge, gym, and swimming pool
- Moments from Battersea Power Station Underground and riverside amenities

Electric Boulevard, SW11

Approx Gross Internal Area = 43.5 sq m / 468 sq ft

EBI



The Floor plan is not to scale and measurements and areas shown are approximate and therefore should be used for illustrative purposes only. The plan has been prepared in accordance with the RICS code of Measuring Practice and whilst we have confidence in the information produced it must not be relied on. Maximum lengths and widths are represented on the floor plan. If there is any aspect of particular importance, you should carry out or commission your own inspection of the property.
Copyright © BleuPlan

