



Oakley House, 10 Electric Boulevard, SW11 8BS

Price:
£ 495,000

Oakley House, 10 Electric Boulevard, SW11 8BS

Price: £ 495,000

[View Property](#)

OVERVIEW

A beautifully presented studio apartment set within the iconic Battersea Power Station development, finished to an exceptional standard and offering a generous private winter garden for year-round use.

This well-designed apartment features a bright open-plan living and dining area, complemented by a sleek, fully integrated modern kitchen with high-specification appliances. Floor-to-ceiling glazing leads directly onto a spacious winter garden, creating an extended living space ideal for relaxing or entertaining.

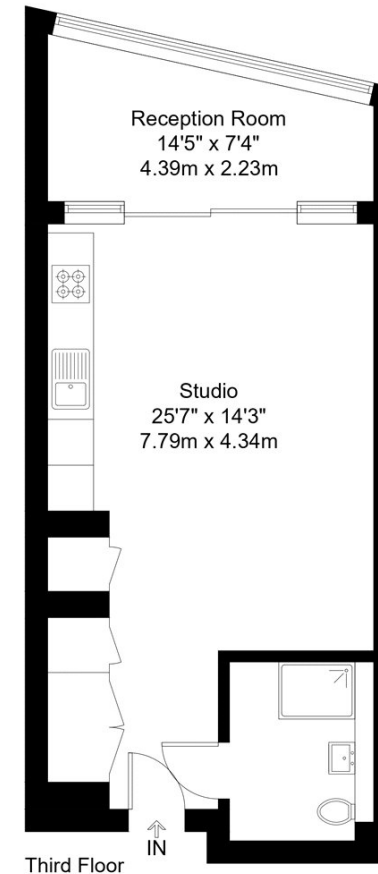
KEY FEATURES

- Studio apartment in the iconic Battersea Power Station development
- Spacious private winter garden for year-round living and entertaining
- Bright open-plan living area with fully integrated modern kitchen
- High-specification finishes and premium materials throughout
- Built-in wardrobe with separate dressing area
- Stylish contemporary bathroom suite
- Residents' amenities including 24-hour concierge, gym and swimming pool
- Excellent location moments from Battersea Power Station Underground and riverside leisure, dining and retail options

Electric Boulevard, SW11

Approx Gross Internal Area = 43.5 sq m / 468 sq ft

EBI



The Floor plan is not to scale and measurements and areas shown are approximate and therefore should be used for illustrative purposes only. The plan has been prepared in accordance with the RICS code of Measuring Practice and whilst we have confidence in the information produced it must not be relied on. Maximum lengths and widths are represented on the floor plan. If there is any aspect of particular importance, you should carry out or commission your own inspection of the property.

Copyright © BleuPlan

