

The EBI logo is located in the top right corner of the image. It consists of the letters 'EBI' in a white, serif font, centered within a dark blue square. The square is positioned in the upper right corner of the overall image.

EBI

A large, semi-transparent EBI logo is centered in the middle of the image. It features the letters 'EBI' in a light blue, serif font, with horizontal lines above and below the text. The logo is overlaid on the living area of the apartment, which includes a blue sofa and a coffee table.

EBI

**Northam Tower, 2 Mabyn Lane, SE10 0JX**

Price:  
£ 2,200 /pcm

# Northam Tower, 2 Mabyn Lane, SE10 0JX

Price: £ 2,200 /pcm1 bedroom house

[View Property](#)

## OVERVIEW

This beautifully appointed south facing one bedroom apartment offers 577sqft of thoughtfully designed living space, featuring a bright open-plan kitchen and living area and a generous bathroom space.

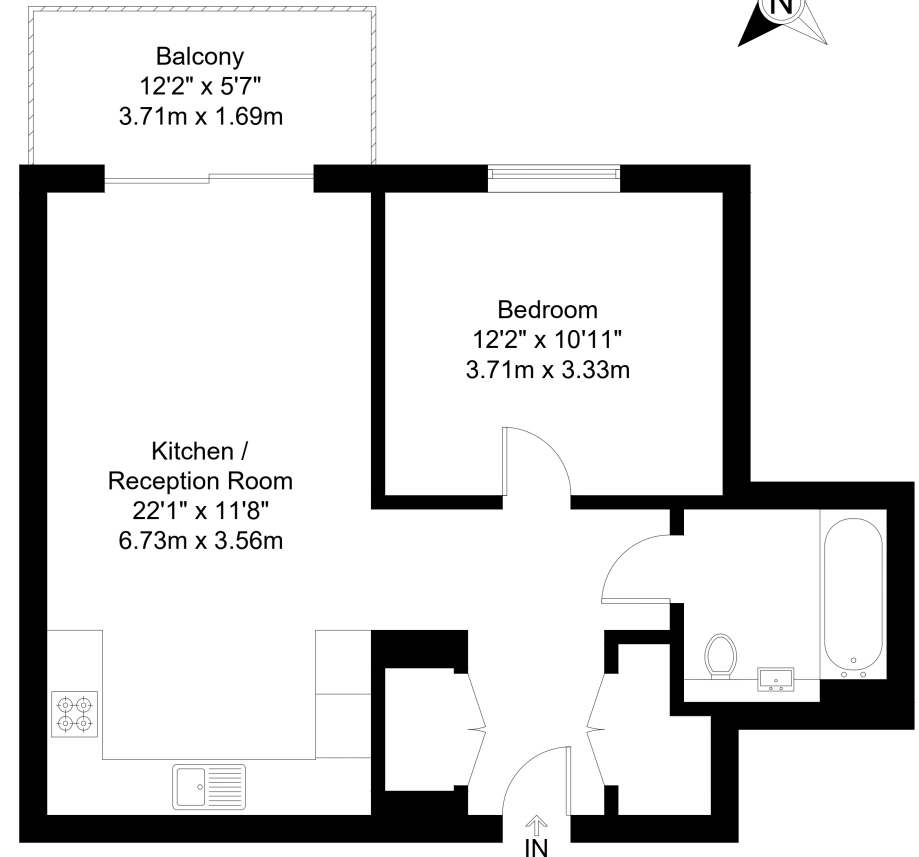
Elegant interior finishes include oak flooring, muted green Silestone worktops, and sleek porcelain-tiled bathrooms, creating a calm and refined aesthetic throughout.

## KEY FEATURES

- One bedroom
- 566sqft
- Bright open plan living and kitchen area
- Private balcony
- Oak flooring and Silestone worktops
- Modern porcelain-tiled bathroom
- 24 hour concierge, gym and co-working
- Landscaped podium gardens
- 0.3 km to North Greenwich Underground Zone 2

# Northam Tower, SE10

Approx Gross Internal Area = 54.4 sq m / 586 sq ft  
Balcony = 6.3 sq m / 68 sq ft  
Total = 60.7 sq m / 653 sq ft



Eleventh Floor

The Floor plan is not to scale and measurements and areas shown are approximate and therefore should be used for illustrative purposes only. The plan has been prepared in accordance with the RICS code of Measuring Practice and whilst we have confidence in the information produced it must not be relied on. Maximum lengths and widths are represented on the floor plan. If there is any aspect of particular importance, you should carry out or commission your own inspection of the property.  
Copyright @ BleuPlan



