



EBI



ERNEST-BROOKS

**Nithdale Road, Plumstead, SE18 3PA**

Price:  
£ 620,000





# Nithdale Road, Plumstead, SE18 3PA

Price: £ 620,000 4 bedroom house

[View Property](#)

## OVERVIEW

A beautiful and stylishly presented four bedroom Victorian terrace family home. Situated on a highly sought after residential road in SE18.

This traditional Victorian family home has been refurbished to the highest degree and is in pristine condition throughout with love and care by the current owner. Offering a large open bright through lounge with dual aspect windows, high ceilings, feature fire place and space for dining, the kitchen extension offers skylights allowing a cascade of ample natural light comprising of high gloss contemporary units with granite work tops and a purpose built breakfast bar, a high glossed shine tiled flooring, integrated appliances with a stylish and functional extractor fan, a utility room and bathroom with a freestanding roll top bath. To the first floor you find three double bedrooms one of which is being currently used as an office space and a further tiled shower room, the top floor comprises of a large bedroom with dual aspect sky lights and ample storage.

## KEY FEATURES

- Four Bedroom Home
- Period Property
- Recently Refurbished
- Manicured Rear South Facing Garden
- Three Floors
- Expansive Kitchen/Dine
- Two Bathrooms
- Immaculate Designed Interior/Decor
- Free Standing Roll Top Bath
- \* 7 Days A Week Viewings \*

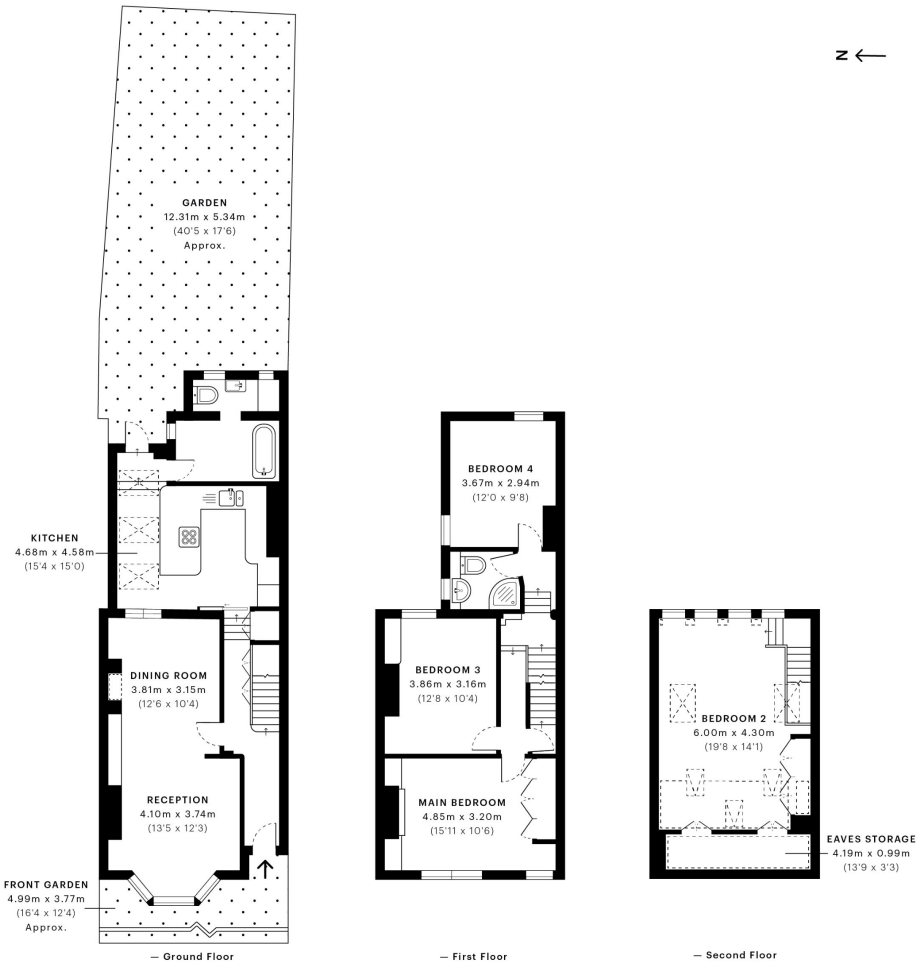


Nithdale Road, SE18

CAPTURE DATE: 08/01/2021 LASER SCAN POINTS: 138,850,807

GROSS INTERNAL AREA

143.92 sqm / 1549.14 sqft



	GROSS INTERNAL AREA (GIA) The footprint of the property		NET INTERNAL AREA (NIA) Excludes walls and external features Includes washrooms, restricted head height		EXTERNAL STRUCTURAL FEATURES Balconies, terraces, verandas etc.		RESTRICTED HEAD HEIGHT Limited use area under 1.5m
	143.92 sqm / 1549.14 sqft		130.44 sqm / 1404.04 sqft		0.00 sqm / 0.00 sqft		9.69 sqm / 104.30 sqft



Spec Verified floor plans are produced in accordance with Royal Institution of Chartered Surveyors' Property Measurement Standards. Plots and gardens are illustrative only and excluded from all area calculations. Due to rounding, numbers may not add up precisely. All measurements shown for the individual room lengths and widths are the maximum points of measurements captured in the scan.

IPMS 3B RESIDENTIAL 137.23 sqm / 1477.13 sqft  
IPMS 3C RESIDENTIAL 130.80 sqm / 1407.92 sqft

SPEC ID: 5ff5d7feb352000dbc977a5b

## Energy Performance Certificates



