



Navigator Wharf, Royal Arsenal Riverside, SE18 6FR

Price:
£ 600,000

Navigator Wharf, Royal Arsenal Riverside, SE18 6FR

Price: £ 600,000 2 bedroom house

[View Property](#)

OVERVIEW

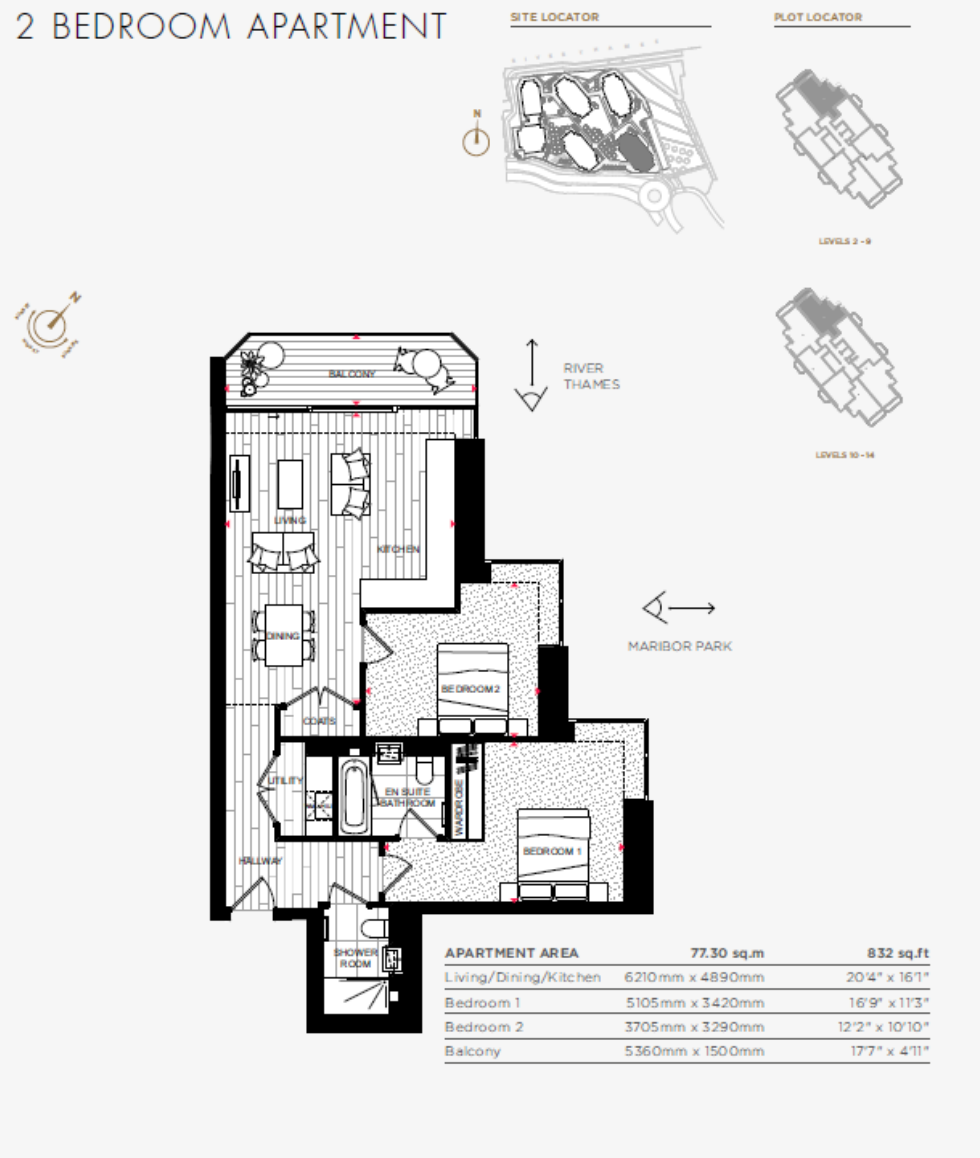
Stunning two bedroom apartment located on the 14th floor of the Navigator Wharf building within Royal Arsenal Riverside. The apartment consists of 832 sqft with dual aspect (NW/NE) and private balcony.

Situated on the banks of the River Thames, in the Royal Borough of Greenwich, the homes will offer sensational Thames-side living. Open spaces are abundant, from the lawn and formal gardens of Wellington Park through to green corners, wide avenues and broad squares, the forthcoming 4 acre Waterfront Park and over 1km of river walks. Designed and fitted to exceptional standard and ideally located for the forthcoming on-site Crossrail station, a vibrant retail hub on your doorstep. Arriving in 2021, Crossrail will offer dramatically reduced journey times to Canary Wharf (08 mins), Liverpool Street (14 mins), Bond Street (22 mins) and even Heathrow (50 mins).

KEY FEATURES

- Large two bedroom apartment
- 24 Hour Concierge & Residents Gym
- Future Crossrail Site
- Perfect first home or B2L
- Tenure: Leasehold 999 years
- Service charge: £3.99 per sqft
- Ground rent: £375 per annum
- Help to buy available within
- Viewings welcome by appointment

2 BEDROOM APARTMENT



Energy Performance Certificates

Energy Efficiency Rating

	Current	Potential
Very energy efficient - lower running costs		
(92+) A		

