



Marco Polo Tower, 6 Bonnet Street, E16 2BZ

Price:

£ 430,000

Marco Polo Tower, 6 Bonnet Street, E16 2BZ

Price: £ 430,000 1 bedroom house

[View Property](#)

OVERVIEW

An exemplary, 9th floor recently completed one bedroom apartment, in Royal Wharf's most sought after development phase, Marco Polo Building.

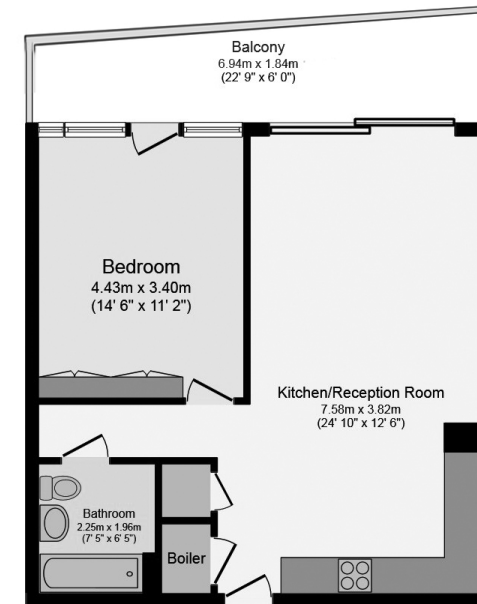
The property itself offers the premium east views towards the complex's well-appointed communal gardens. These views can be accessed via the 140 Sq. Ft private balcony.

KEY FEATURES

- Recently completed property
- One bedroom apartment
- Situated on the ninth floor
- Compiled over 560 Sq.Ft
- Private balcony with east views toward communal garden area
- Residents Concierge Service
- Tenure: leasehold 997 years
- Est Service charge: £3.60 psf
- Ground rent: £400 pa
- 0.1 Miles from Pontoon Dock DLR Station

Marco Polo Building

ERNEST-BROOKS
INTERNATIONAL



Ninth Floor

Floor area 53.0 sq. m. (562 sq. ft.) approx



Whilst every attempt has been made to ensure the accuracy of the floor plan contained here, measurements of doors, windows, rooms and any other items are approximated and no responsibility is taken for any error, omission or mis-statement. This plan is for illustrative purposes only and should be used as such by prospective purchaser. The service, system and appliances shown have not been tested and no guarantee as to their operability or efficiency can be given.

