



Mandarin Oriental Residence, 22 Hanover Square, W1S 1JP

Price:

£ 6,600 /pcm

Mandarin Oriental Residence, 22 Hanover Square, W1S 1JP

Price: £ 6,600 /pcm

[View Property](#)

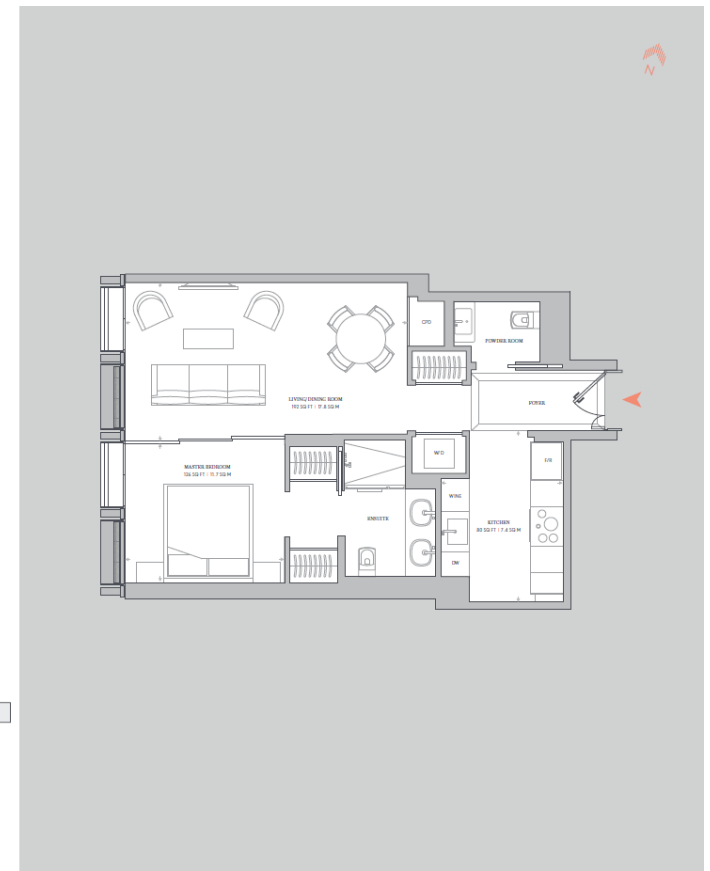
OVERVIEW

Rare opportunity to let an exquisite residential manhattan-style one bed / two bathroom apartment, situated on the 10th floor of the South tower in the formidable Mandarin Oriental Residence. Boasting the highest possible specification living space.

Situated on Hanover Square, Mayfair's oldest square, Hanover Bond is the front door to the best that Mayfair and London have to offer. The latest addition to Clivedale London's development portfolio, Hanover Bond will deliver The Residences at Mandarin Oriental Mayfair, London and a Mandarin Oriental hotel with 50 guestrooms.

KEY FEATURES

- Exquisite residential apartment
- Mandarin Oriental Residence
- Fine dining
- House keeping
- Valet Parking
- Opulent Spa
- Extraordinary facilities/services
- 24 Concierge
- Prestigious location



Energy Performance Certificates

