

The logo for EBI, consisting of the letters 'E', 'B', and 'I' in a white serif font, centered within a dark blue square. The letters are separated by thin horizontal lines above and below them.

EBI

A photograph of a modern multi-story apartment building. The building features a mix of light-colored panels and brickwork. It has several balconies with glass railings and large windows. The sky is clear and blue. A dark blue banner is at the bottom of the image containing text.

Maestro Apartments, 55 Violet Road, E3 3FW

Price:

£ 375,000

Maestro Apartments, 55 Violet Road, E3 3FW

Price: £ 375,000 2 bedroom house

[View Property](#)

OVERVIEW

****NO STAMP DUTY TO PAY FOR FIRST-TIME BUYERS****

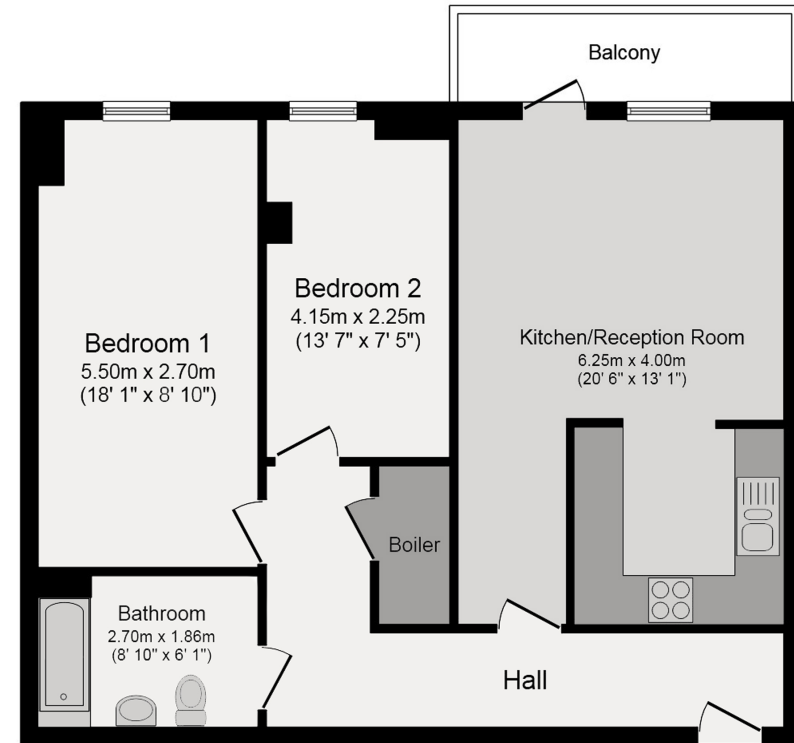
Located on the third floor of this popular modern development with good size balcony offers a great home for First Time Buyers or as an investment property. The block offers residents a large communal roof terrace with excellent views over the city, bike storage and an on site gym (extra cost).

KEY FEATURES

- Stamp duty exempt for first time buyers
- Third floor
- Balcony
- No onward chain
- Two bedrooms
- Communal gardens
- Purpose built
- Storage
- Well presented
- Great investment

Maestro Apartments

ERNEST-BROOKS
INTERNATIONAL



Third Floor

Total floor area 68.3 sq.m. (735 sq.ft.) approx

Whilst every attempt has been made to ensure the accuracy of the floor plan contained here, measurements of doors, windows, rooms and any other items are approximated and no responsibility is taken for any error, omission or mis-statement. This plan is for illustrative purposes only and should be used as such by prospective purchaser. The service, system and appliances shown have not been tested and no guarantee as to their operability or efficiency can be given.

Energy Performance Certificates

