



Macaulay Square, Clapham, SW4 0RR

Price:
£ 425,000

Macaulay Square, Clapham, SW4 0RR

Price: £ 425,000 1 bedroom house

[View Property](#)

OVERVIEW

A beautifully presented one-bedroom garden flat, ideally positioned on one of Clapham's most desirable roads. Set within a purpose-built Art Deco building, the property is offered to the market with no onward chain and combines character, practicality, and excellent outdoor space.

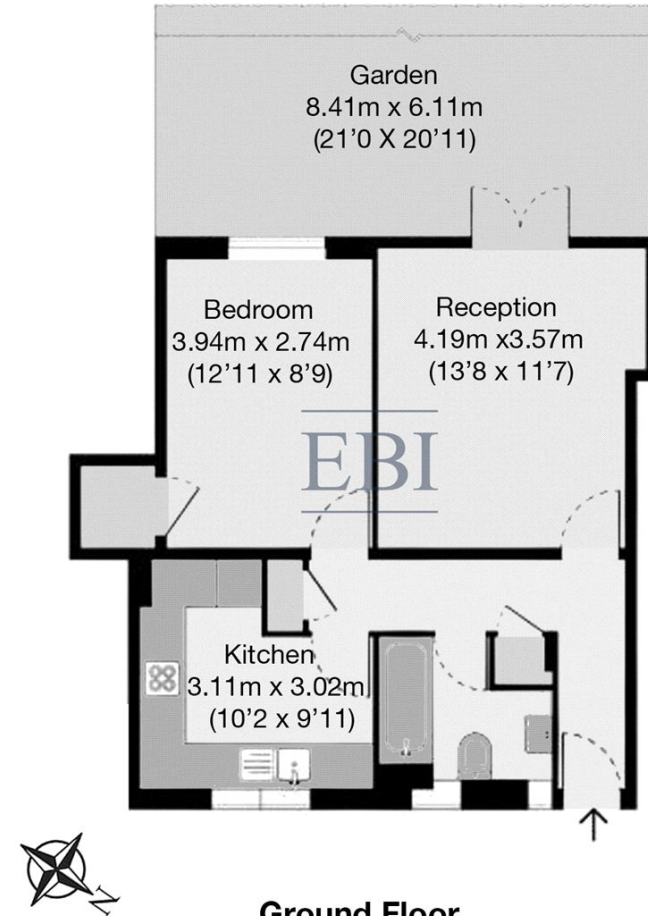
The accommodation comprises a bright and inviting reception room with French doors opening directly onto a charming private garden, perfect for relaxing or entertaining. The bedroom is generously proportioned and features a large sash window along with built-in storage. A separate, stylish kitchen offers modern fittings and good workspace, while the contemporary bathroom is finished to a high standard. Additional storage is provided throughout, enhancing the overall functionality of the home.

KEY FEATURES

- Spacious double bedroom with built-in storage
- Contemporary bathroom with modern fittings
- Separate kitchen and well-proportioned living area
- Wood flooring throughout living spaces
- Private garden ideal for relaxing or entertaining
- On-street and resident parking available
- Local shops and amenities within easy walking distance
- Close to Clapham Common Underground station

Macaulay Square

EBI



Ground Floor

Floor Area 47.13m² (507sq.ft.) approx

Whilst every attempt has been made to ensure the accuracy of the floor plan contained here, measurements of doors, windows, rooms and any other items are approximated and no responsibility is taken for any error, omission or mis-statement. This plan is for illustrative purposes only and should be used as such by prospective purchaser. The service, system and appliances shown have not been tested and no guarantee as to their operability or efficiency can be given.

Energy Performance Certificates

