



Lismore Boulevard, London, NW9 4DD

Price:
£ 430,000

Lismore Boulevard, London, NW9 4DD

Price: £ 430,000 2 bedroom house

[View Property](#)

OVERVIEW

Unique Opportunity - EWS1 Compliant Two bedroom two bathroom apartment spread over (702 Sq.Ft) plus balcony, Dual aspect looking over north and East. Available in Reverence House, Colindale Gardens, London, NW9.

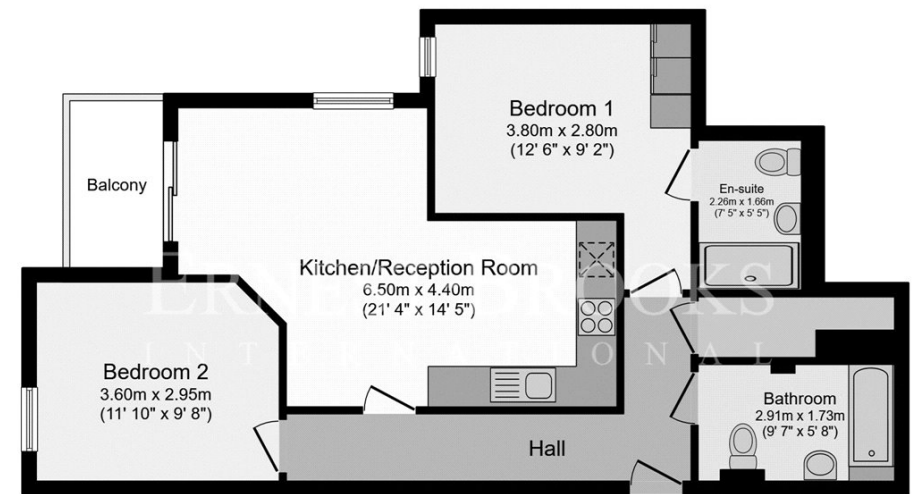
This beautifully presented third floor apartment comprises entrance hall with utility/storage cupboard, impressive dual aspect reception room with dining area and door to extensive private balcony, stylish open plan fitted kitchen with work tops and integrated appliances, master bedroom with fitted wardrobes and en-suite shower room, double guest bedroom two and family bathroom.

KEY FEATURES

- EWS1 Compliant
- 702 Sq.ft Two Bedroom Apartment
- Gym, Concierge and Steam Room
- Plethora Of Local Shops & Amenities
- Under Floor Heating Throughout
- uPVC Double Glazing
- Private Balcony With Lovely Views
- Moments Away From Colindale Gardens
- OPEN 7 DAYS A WEEK!

Reverence House

ERNEST-BROOKS
INTERNATIONAL



Third Floor

Floor area 65.2 sq.m. (702 sq.ft.) approx

Total floor area 65.2 sq.m. (702 sq.ft.) approx

Whilst every attempt has been made to ensure the accuracy of the floor plan contained here, measurements of doors, windows, rooms and any other items are approximated and no responsibility is taken for any error, omission or mis-statement. This plan is for illustrative purposes only and should be used as such by prospective purchaser. The service, system and appliances shown have not been tested and no guarantee as to their operability or efficiency can be given.

