



Liner House, Royal Wharf, E16 2SJ

Price:
£ 699,000

Liner House, Royal Wharf, E16 2SJ

Price: £ 699,000 2 bedroom house

[View Property](#)

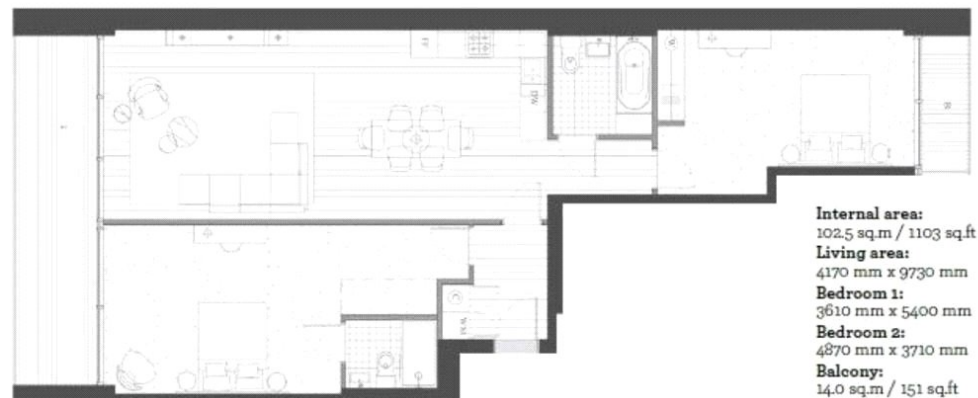
OVERVIEW

A striking and generously proportioned 1,100 sq ft two-bedroom apartment set on the first floor of the prestigious Royal Wharf development, one of E16's most desirable riverside addresses by Ballymore. This exceptional home also boasts a private 151 sq ft balcony, offering valuable outdoor space perfect for relaxing or entertaining.

The apartment is thoughtfully designed with a bright and expansive open-plan living and dining area, seamlessly extending onto the balcony - ideal for modern living. The contemporary kitchen is fully equipped with high-spec integrated appliances, elegant stone worktops, and ample storage, combining style with functionality.

KEY FEATURES

- First-floor two-bedroom apartment, approx. 1,100 sq ft
- Private balcony, approx. 151 sq ft outdoor space
- Bright open-plan living with direct balcony access
- Modern kitchen with integrated appliances and stone worktops
- Principal bedroom with built-in storage and en-suite
- Second double bedroom with contemporary family bathroom
- Concierge, gym, pool, and spa for residents
- Excellent DLR links and close to London City Airport



Energy Performance Certificates

Score	Energy rating	Current	Potential
92+	A		
81-91	B	82 B	82 B
69-80	C		
55-68	D		
39-54	E		
21-38	F		
1-20	G		

