

EBI



Lightbox, Media City, Salford, M50 2EQ

Price:

£ 175,000

Lightbox, Media City, Salford, M50 2EQ

Price: £ 175,000 1 bedroom house

[View Property](#)

OVERVIEW

Quick sale needed Premium specification 15th floor, one bedroom apartment (501 sqft) located in this brand new development in the heart of MediaCity, further boasting a private balcony and a separate bathroom, living and dining area. Available in the highly anticipated Lightbox development, Manchester. Completion due: July 2019

The apartment offers contemporary styled kitchens and bathrooms, along with a high specification throughout. You will also benefit from a full concierge service, 24-hour security, access to car parking spaces on a rental basis and bike storage. Amenities include: an on-site dentist, cafes, bars and restaurants, a Virgin Active health club, a Metrolink stop for quick and easy access into Manchester, and a 5-acre beautifully landscaped public realm plaza.

KEY FEATURES

- Brand New Development!r1 Bedroom with Private Balconyr513 Sqft, 15th FloorrOn-site Dentist, Cafes and RestaurantsrPremium High Floor SpecificationrHeart of MediaCityUKrService charge: £3.50 psfrGround Rent: £250 parTenure: Leasehold 250 YearsrCompletion July 2019

1 Bed (Standard)

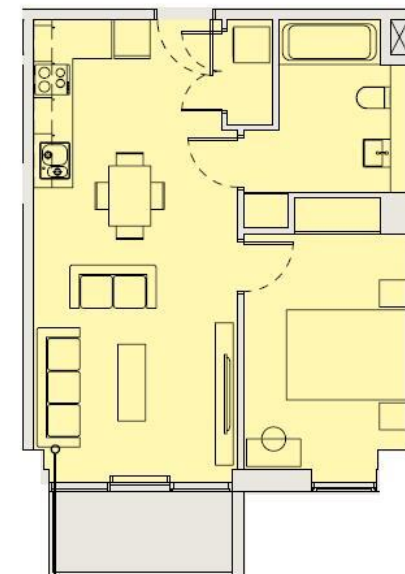
46.57 m² / 501 ft²

Kitchen/Living 3.4m x 7.5m

Bedroom 2.75m x 3.92m

Bathroom 2.1m x 2.87m

WATERFRONT



MEDIACITYUK

