

NEST-BROOKS

THE RAINA DEVELOPMENT

Legacy Tower, Stratford Central, E15 4QS

Price:

£ 585,000

Legacy Tower, Stratford Central, E15 4QS

Price: £ 585,000 2 bedroom house

[View Property](#)

OVERVIEW

BEST PRICED & POSITIONED 2 BEDROOM! Great value 12th floor dual aspect 2 bedroom apartment spread over (905 Sq. Ft) and offering panoramic views South East & South West towards Canary Wharf, O2 & The Olympic Park. Available in the soon to complete Stratford Central development, Stratford, E15.

Stratford Central will set a new level of luxury for the Stratford area with facilities such as 24 hour concierge services, state of the art gymnasium and underfloor heating. Stratford station, including Tube, Overground, DLR and National Rail connections only a minute walk from the development.

KEY FEATURES

- 905 sqft Dual Aspect Skyline Views! Wintre Gaden Views Ove Canay Wharf & The Olympic Park
Great Investment Area
Residents Concierge Services
Private Residents Gymnasium
Rooftop Gardens
Service Charge: £33.50 psf
Ground Rent: £3550 pa
Tenure: Leasehold 250 Years
Completion due May / June 2018

LEVEL

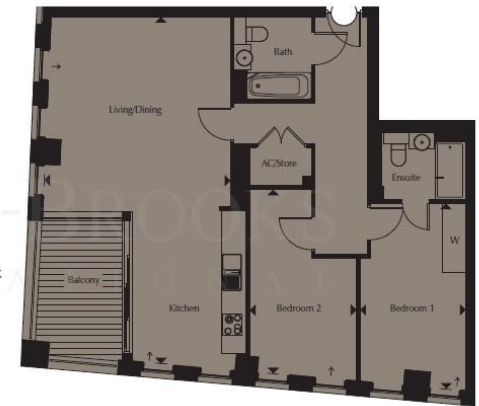
12



APARTMENT

Kitchen/Living/Dining	9.02m x 4.85m	29'7" x 15'11"
Bedroom 1	4.83m x 2.75m	15'10" x 9'0"
Bedroom 2	4.79m x 2.77m	15'9" x 9'1"
Total Area	84.1 sq m	905 sq ft

View towards Stratford, the Queen Elizabeth Olympic Park & The City



View towards Canary Wharf

