



Landmark Pinnacle, Marsh Wall, E14 9BT

Price:
£ 735,000

Landmark Pinnacle, Marsh Wall, E14 9BT

Price: £ 735,000 1 bedroom house

[View Property](#)

OVERVIEW

Brand new, well-positioned, city-facing high-floor apartment in the popular Landmark Pinnacle development. The apartment offers 645 sq. ft of accommodation with full-height windows, providing spectacular skyline views down the Thames and across the City of London.

Underfloor heating throughout, along with comfort cooling and premium fixtures and fittings.

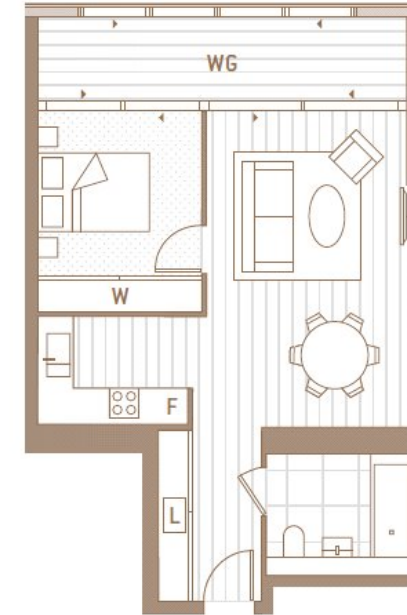
KEY FEATURES

- High-floor apartment
- 24-hour concierge service
- Private dining and meeting facilities
- Residents' roof terraces
- London Square Garden access
- Media and games room

RESIDENCES
LEVELS 28-55

PANORAMA WEST: CITY OF LONDON/RIVER THAMES

ONE BEDROOM



Type B

Living Area
3.7 x 5.7 m

Bedroom
3.0 x 3.7 m

Internal Area
49.9 sq m / 537 sq ft

Winter Garden
10.0 sq m / 108 sq ft

Total Area
59.9 sq m / 645 sq ft

Energy Performance Certificates

Score	Energy rating	Current	Potential
92+	A		
81-91	B	87 B	87 B
69-80	C		
55-68	D		
39-54	E		
21-38	F		
1-20	G		

