



## Landmark Pinnacle, Canary Wharf, E14 9TB

Price:

£ 2,400 /pcm





# Landmark Pinnacle, Canary Wharf, E14 9TB

Price: £ 2,400 /pcm1 bedroom house

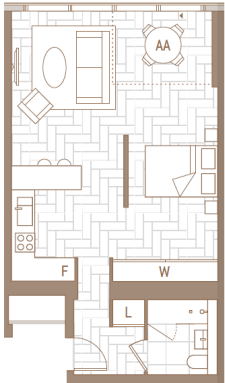
[View Property](#)

## OVERVIEW

High floor one bedroom manhattan suite apartment offers (559 sqft) of accommodation and located on the 59th floor, situated within Landmark Pinnacle, Canary Wharf, E14.

Boasting full height windows offering skyline views towards Canary Wharf and directly over South Dock and beyond. Underfloor heating throughout alongside comfort cooling and high quality fixtures and fittings.

LANDMARK  
PINNACLE



Living Area  
5.8 x 7.6 m  
Internal Area  
46.0 sq m / 495 sq ft  
Amenity Area  
5.0 sq m / 54 sq ft  
Total Area  
51.0 sq m / 549 sq ft

## KEY FEATURES

- Available July
- 24 Hour Concierge
- Residents Roof Terraces
- Media Room and Games Room
- Private Dining and Meeting Rooms
- London Square Garden
- Media Room and Games Room
- Situated On The 59th Floor
- Residents Gymnasium
- OPEN 7 DAYS A WEEK

## Energy Performance Certificates

