

EBI

ERNEST BROOKS

Landmark Pinnacle, Canary Wharf, E14 9BT

Price:
£ 790,000

Landmark Pinnacle, Canary Wharf, E14 9BT

Price: £ 790,000 1 bedroom house

[View Property](#)

OVERVIEW

Prestige PENTHOUSE APARTMENT. This premier apartment offers arguably the best panoramic City views the development has to offer! Spread over (732 Sq. Ft) plus a winter garden. Boasting full height windows, underfloor heating throughout alongside comfort cooling and high quality fixtures and fittings.

The building stands four-square at the head of South Dock on the edge of Canary Wharf, with views that extend out across London's unmistakable monuments and waterways. Landmark Pinnacle stands on the western edge of Canary Wharf. Its pure glass-clad form is conceived to complement the surrounding modern skyline and reflect the light and movement of the water and sky.

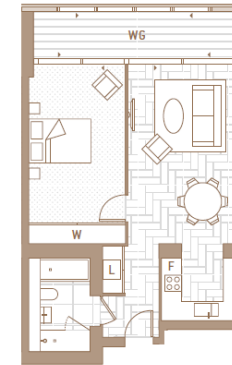
KEY FEATURES

- 73rd floor apartment
- 24 hour concierge
- Private Dining & Meeting Rooms
- Residents Roof Terraces
- London Square Garden
- Media Room & Games Room
- Service Charge £5.50 psf pa
- Ground Rent £600 pa
- Tenure: 999 Year Lease
- Completion from Q3 2021

PINNACLE RESIDENCES
LEVELS 65-73

PANORAMA WEST: CITY OF LONDON/RIVER THAMES

ONE BEDROOM (E)



Energy Performance Certificates

Score	Energy rating	Current	Potential
92+	A		
81-91	B	86 B	86 B
69-80	C		
55-68	D		
39-54	E		
21-38	F		
1-20	G		

