



Landmark Pinnacle, 10 Marsh Wall, E14 9GU

Price:
£ 850,000

Landmark Pinnacle, 10 Marsh Wall, E14 9GU

Price: £ 850,000 2 bedroom house

[View Property](#)

OVERVIEW

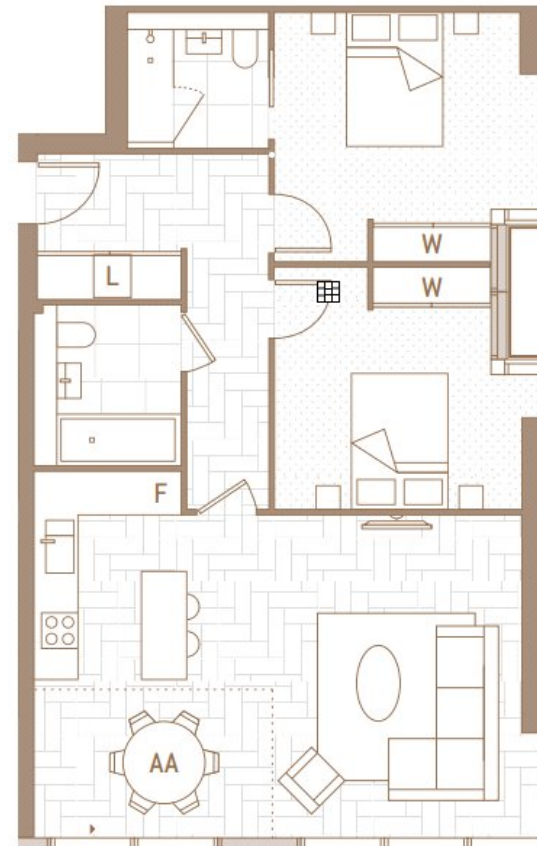
Positioned on the 62nd floor of the iconic Landmark Pinnacle, this impressive 905 sq. ft. apartment offers sweeping skyline views across Canary Wharf and the South Dock through full-height windows. The interiors are finished to a high standard, with comfort cooling, underfloor heating, and quality fixtures throughout.

Landmark Pinnacle, one of London's tallest residential towers at 75 floors, is located at the edge of South Dock and offers world-class facilities including a state-of-the-art gym, Pilates studio, golf simulator, and residents' lounges with private dining rooms – all set on the 56th floor with panoramic views.

KEY FEATURES

- Spacious 905 sq. ft. apartment positioned on the 62nd floor with exceptional views
- Full-height windows offering panoramic outlooks over Canary Wharf and South Dock
- High-spec interiors with underfloor heating, comfort cooling, and premium finishes
- Landmark Pinnacle is one of London's tallest residential towers at 75 storeys
- Exceptional residents' facilities including gym, Pilates studio, golf simulator & lounges
- Two elegant private dining rooms available exclusively to residents on level 56
- Stunning glass-clad architecture designed to reflect light, water, and skyline
- Just a 5-minute walk to Heron Quays DLR and 7 minutes to Canary Wharf station

PINNACLE RESIDENCES



Living Area
7.0 x 4.8 m

Bedroom 1
3.9 x 3.7 m

Bedroom 2
3.9 x 3.5 m

Internal Area
75.7 sq m / 815 sq ft

Amenity Area
7.0 sq m / 75 sq ft

Total Area
82.7 sq m / 890 sq ft

Energy Performance Certificates

Score	Energy rating	Current	Potential
92+	A		
81-91	B	84 B	84 B
69-80	C		
55-68	D		
39-54	E		

