



EBI

**Landmark East Tower, E14 9BT**

Price:  
£ 425,000

# Landmark East Tower, E14 9BT

Price: £ 425,000 1 bedroom house

[View Property](#)

## OVERVIEW

Situated on the 12th floor of the prestigious East Tower within The Landmark development, this modern one-bedroom apartment offers stunning east-facing views towards the dock.

Designed with floor-to-ceiling windows throughout, the apartment is bright and airy. The open-plan living space features a sleek contemporary kitchen equipped with integrated appliances, including an electric oven, hob, fridge freezer, and washing machine. The spacious double bedroom benefits from built-in wardrobes, and the property also includes a well-appointed modern bathroom.

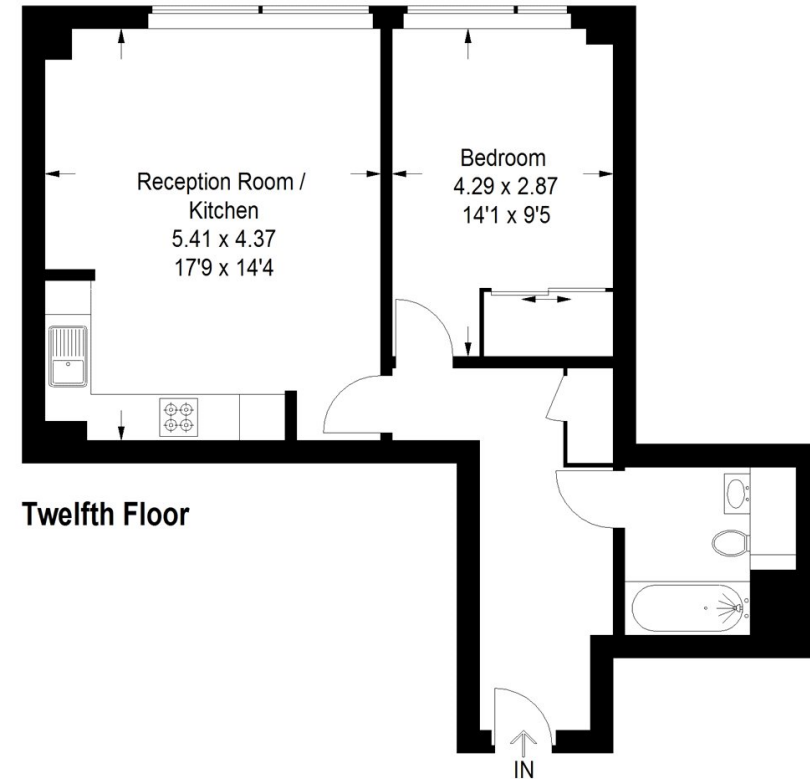
## KEY FEATURES

- Located on the 12th floor of the East Tower within the prestigious Landmark development, E14
- Bright and airy interiors with floor-to-ceiling windows and stunning east-facing views over the dock
- Spacious open-plan reception room with modern fitted kitchen and integrated appliances
- Generous double bedroom with built-in wardrobes
- Contemporary bathroom with high-quality fittings
- Access to 24-hour concierge and onsite residents' gym
- Prime Canary Wharf location, moments from shops, restaurants, and four major shopping centres
- Excellent transport links via Heron Quays DLR and Canary Wharf (Jubilee & Elizabeth lines)

# Landmark East Tower, E14

Approximate Gross Internal Area  
52.0 sq m / 560 sq ft

EBI



Property of Ernest Brooks International

This plan is for layout guidance only. Not drawn to scale unless stated. Windows and door openings are approximate. Whilst every care is taken in the preparation of this plan, please check all dimensions, shapes and compass bearings before making any decisions reliant upon them. (ID1172053)

