

**Landmark East Tower, E14 9BT**

Price:  
£ 425,000





# Landmark East Tower, E14 9BT

Price: £ 425,000 1 bedroom house

[View Property](#)

## OVERVIEW

Situated on the 12th floor of the East Tower at Landmark, E14, this well-presented one-bedroom apartment enjoys attractive east-facing views across the dock and a prime Canary Wharf location.

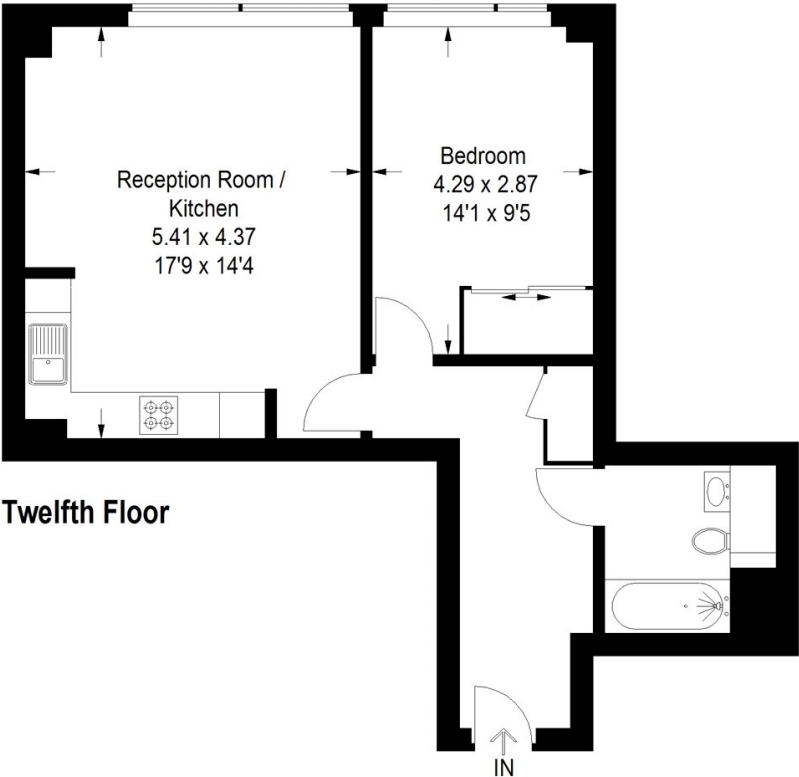
The apartment is filled with natural light from floor-to-ceiling windows and offers a stylish open-plan reception room with a contemporary fitted kitchen. Integrated appliances include an electric oven and hob, washing machine, and fridge freezer, while the spacious double bedroom features built-in wardrobes and the bathroom is generously proportioned.

## KEY FEATURES

- Chain-free one-bedroom apartment
- Spacious double bedroom with storage
- Contemporary bathroom with modern fittings
- Open-plan kitchen and living area
- Positioned on the 12th floor
- Approx. 565 sq ft / 50 sq m
- 24-hour concierge service
- Residents' on-site gym facilities
- Walking distance to Canary Wharf station

# Landmark East Tower, E14

Approximate Gross Internal Area  
52.0 sq m / 560 sq ft



Property of Ernest Brooks International  
This plan is for layout guidance only. Not drawn to scale unless stated. Windows and door openings are approximate. Whilst every care is taken in the preparation of this plan, please check all dimensions, shapes and compass bearings before making any decisions reliant upon them. (ID1172053)

## Energy Performance Certificates

Score	Energy rating	Current	Potential
22	A		



