



**Landmark East Tower, E14 9BT**

Price:

£ 425,000





# Landmark East Tower, E14 9BT

Price: £ 425,000 1 bedroom house

[View Property](#)

## OVERVIEW

A 12th-floor one-bedroom apartment with east-facing views over the dock, situated within the East Tower of Landmark, E14.

The apartment features floor-to-ceiling windows throughout and comprises an open-plan reception room with a modern kitchen, complete with built-in appliances including an electric oven, hob, washing machine, and fridge freezer. The spacious double bedroom offers built-in wardrobe space, and the bathroom is generously sized.

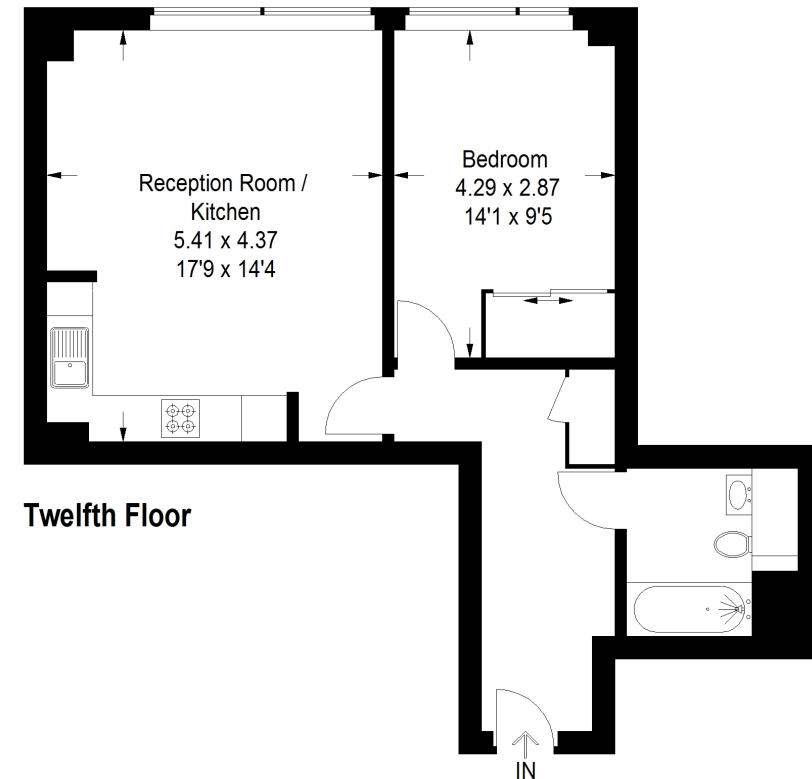
## KEY FEATURES

- Chain-free property
- One double bedroom
- One modern bathroom
- Open-plan kitchen and lounge
- Located on the 12th floor
- 565 sq ft / 50 sq m
- Concierge service available
- Residents' gym access
- Walking distance to Canary Wharf station

# Landmark East Tower, E14

Approximate Gross Internal Area  
52.0 sq m / 560 sq ft

**EBI**



Property of Ernest Brooks International

This plan is for layout guidance only. Not drawn to scale unless stated. Windows and door openings are approximate. Whilst every care is taken in the preparation of this plan, please check all dimensions, shapes and compass bearings before making any decisions reliant upon them. (ID1172053)

## Energy Performance Certificates

**Energy Efficiency Rating**

