



**Landmark East Tower, 24 Marsh Wall, E14 9DB**

Price:  
£ 2,400 /pcm

# Landmark East Tower, 24 Marsh Wall, E14 9DB

Price: £ 2,400 /pcm1 bedroom house

[View Property](#)

## OVERVIEW

This fully furnished one bedroom luxury apartment is set in the popular development, Landmark East Tower, Canary Wharf, E14.

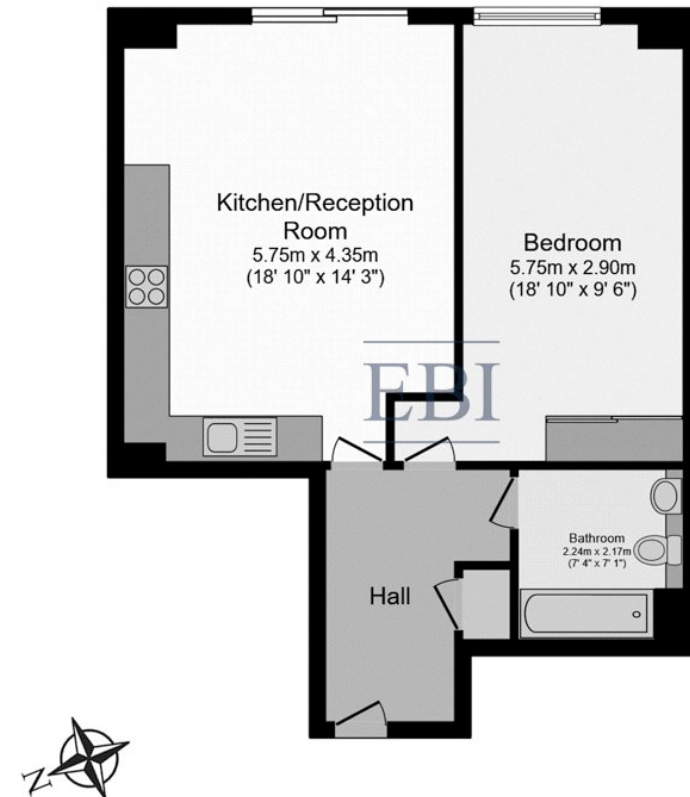
This east-facing apartment has excellent views across Canary Wharf from the 16th floor. The apartment comprises a well-appointed lounge/dining area with modern kitchen featuring in-built appliances, double bedroom, family bathroom and storage space. The space is set apart from others in the building with unique, stylish furniture and

## KEY FEATURES

- 16th floor
- One bedroom
- Fully furnished
- Residents gymnasium
- 24 hour concierge
- Moments away from South Quay DLR & Canary Wharf Underground
- Inspiring views Of Canary Wharf

## Landmark East

ERNEST-BROOKS  
INTERNATIONAL



Sixteenth Floor Plan

Total Floor area 55.5 Sq.m ( 598 sq.ft) approx

Whilst every attempt has been made to ensure the accuracy of the floor plan contained here, measurements of doors, windows, rooms and any other items are approximated and no responsibility is taken for any error, omission or mis-statement. This plan is for illustrative purposes only and should be used as such by prospective purchaser. The service, system and appliances shown have not been tested and no guarantee as to their operability or efficiency can be given.



