



Lamport Close, Woolwich, SE18 5PZ

Price:
£ 200,000

Lampport Close, Woolwich, SE18 5PZ

Price: £ 200,000 1 bedroom house

[View Property](#)

OVERVIEW

STAMP DUTY EXEMPT

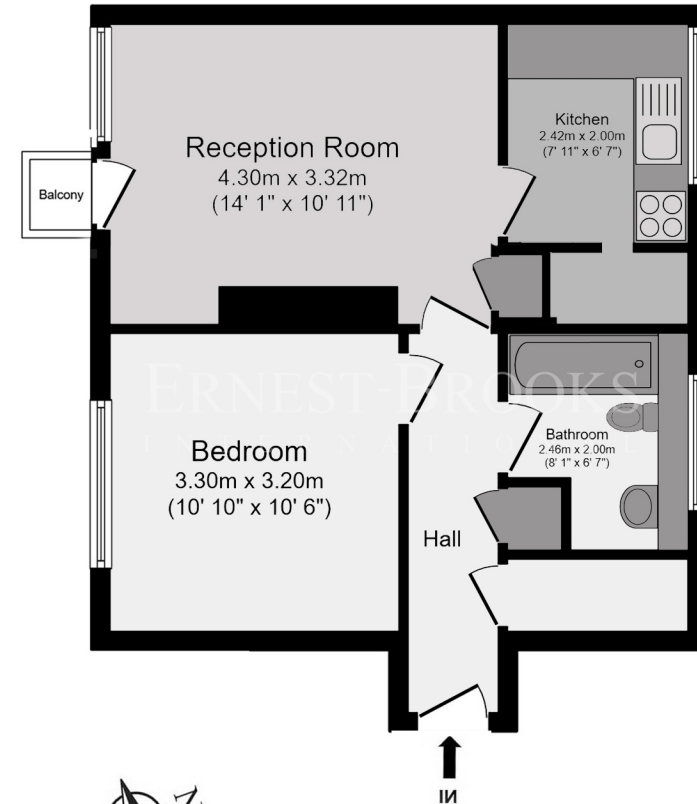
Fantastic opportunity for a rental investor or a first time buyer!

KEY FEATURES

- Stamp duty exempt
- Great rental investment or FTB
- Close to Woolwich Dockyard station
- One bedroom apartment
- Second floor
- Balcony
- Plenty of light
- Close to green space
- Jubilee Line from North Greenwich
- DLR and Elizabeth Line closeby

Lampport Close

ERNEST-BROOKS
INTERNATIONAL



Second Floor

Total floor area 43.9 sq.m. (473 sq.ft.) approx

Whilst every attempt has been made to ensure the accuracy of the floor plan contained here, measurements of doors, windows, rooms and any other items are approximated and no responsibility is taken for any error, omission or mis-statement. This plan is for illustrative purposes only and should be used as such by prospective purchaser. The service, system and appliances shown have not been tested and no guarantee as to their operability or efficiency can be given.

1
€
11

Energy Performance Certificates

