



**Laker House, Royal Wharf, E16 2SH**

Price:  
£ 440,000





# Laker House, Royal Wharf, E16 2SH

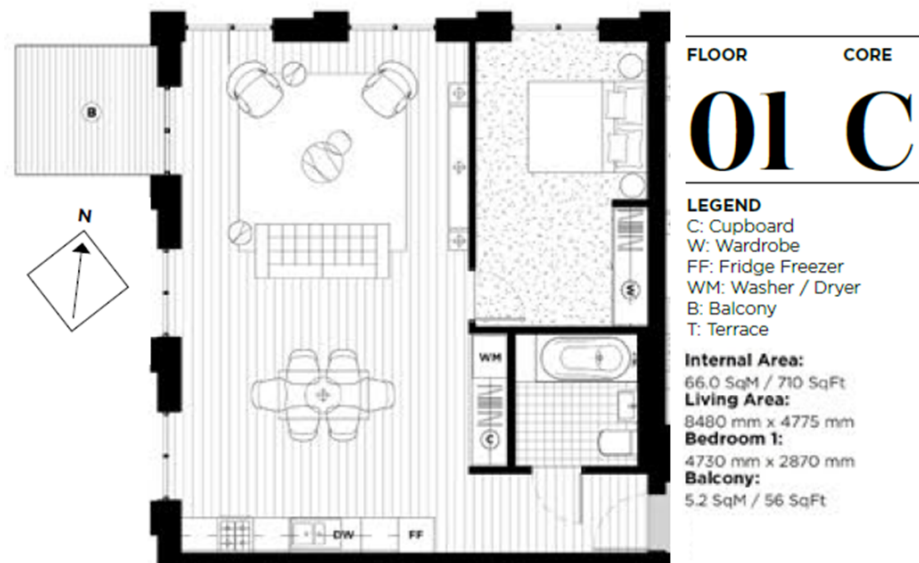
Price: £ 440,000 1 bedroom house

[View Property](#)

## OVERVIEW

**\*River Views - Unique Apartment\*** This one double bedroom luxury apartment set in a very popular development, Laker House, Royal Wharf, E16

This exclusive apartment is well situated on the 1st floor of E16's premier development. The apartment comprises a well-appointed lounge/dining area with modern kitchen featuring inbuilt appliances, one double bedroom, family bathroom and storage space throughout. There is also a large private balcony overlooking the communal garden and benefiting from oblique river views!



## KEY FEATURES

- Tenanted Yielding 4.8%
- 710 sqft - 1st Floor
- 24 HRS Concierge Service
- 25 metre Swimming Pool & Hydrotherapy Pool
- Furniture Package Worth £7,000 Included
- Residents Health Spa
- 24HR Concierge Service & Security
- Courtyard & River Thames Views
- Moments From Pontoon Dock DLR
- OPEN 7 DAYS A WEEK!

## Energy Performance Certificates

