



Lagare, 51 Surrey Row, SE1 0BZ

Price:

£ 1,400,000

Lagare, 51 Surrey Row, SE1 0BZ

Price: £ 1,400,000 4 bedroom house

[View Property](#)

OVERVIEW

Set within the heart of SE1, this exceptional development opportunity at Lagare, 51 Surrey Row, presents a rare chance to acquire two adjoining units and create either a substantial split-level family home or two separate residential apartments in one of Central London's most sought-after and rapidly evolving neighbourhoods.

Currently configured as two substantial office buildings, the properties comprise approximately 1,784 sq ft and 1,556 sq ft respectively, providing a combined internal area of approximately 3,340 sq ft. Arranged over basement, ground, and first floors, the existing layouts offer generous proportions and significant flexibility for redevelopment, making the opportunity particularly attractive to developers, investors, or owner-occupiers seeking a bespoke residential project.

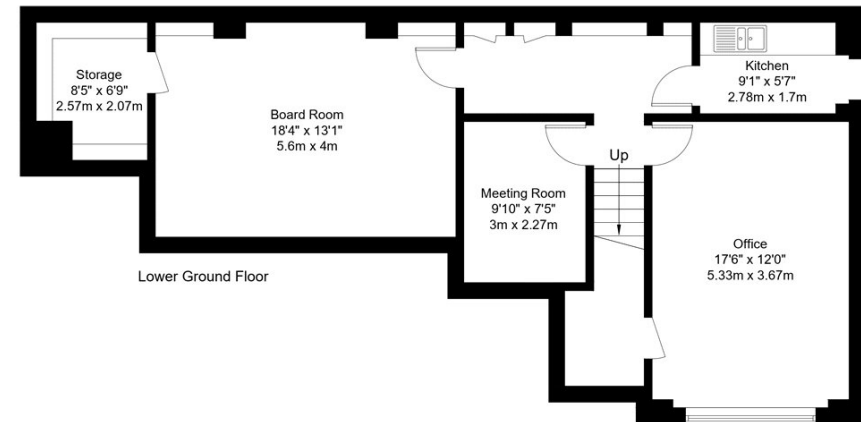
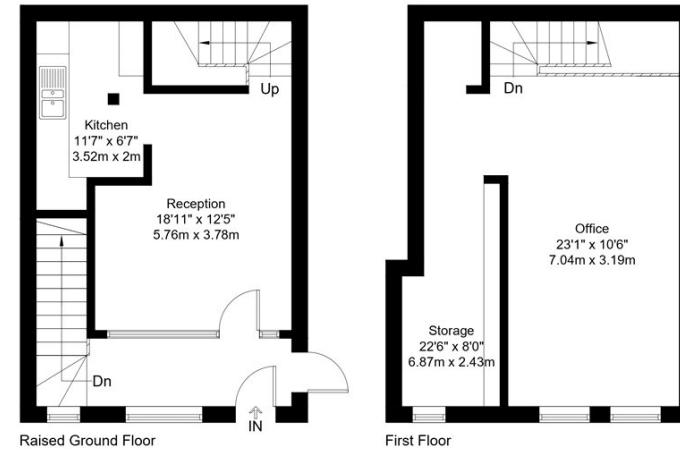
KEY FEATURES

- Rare SE1 development opportunity
- Two adjoining units available together
- Approx. 1,784 sq ft and 1,556 sq ft
- Approx. 3,340 sq ft combined space
- Arranged over basement, ground and first floors
- Potential for 4-5 bedroom split-level home (STPP)
- Alternative potential for two separate apartments (STPP)
- Long leasehold with approximately 972 years remaining
- Commercial EPC rating C
- Prime central London location
- Excellent connectivity to Waterloo and Southwark

Surrey Row, SE1

Approx Gross Internal Area = 144.6 sq m / 1556 sq ft

EBI



The Floor plan is not to scale and measurements and areas shown are approximate and therefore should be used for illustrative purposes only. The plan has been prepared in accordance with the RICS code of Measuring Practice and whilst we have confidence in the information produced it must not be relied on. Maximum lengths and widths are represented on the floor plan. If there is any aspect of particular importance, you should carry out or commission your own inspection of the property.
Copyright © BleuPlan

Surrey Row, SE1

Approx Gross Internal Area = 144.6 sq m / 1556 sq ft

EBI

