

**Kent Building, 47 Hope Street, E14 0QL**

Price:  
£ 3,999 /pcm

# Kent Building, 47 Hope Street, E14 0QL

Price: £ 3,999 /pcm3 bedroom house

[View Property](#)

## OVERVIEW

RARE PENTHOUSE apartment with huge private terrace in Kent Building, located within the prestigious London City Island development. Students welcome.

Spanning over 1,300sqft internally, this beautifully designed apartment offers generous living space throughout. The property comprises a bright and spacious reception room that opens onto a private wraparound balcony, a fully fitted open-plan kitchen with a dedicated dining area, and a principal bedroom with fitted wardrobes and a stylish en suite. There are two further double bedrooms, along with a contemporary family bathroom and a separate utility room with plenty of storage.

## KEY FEATURES

- Penthouse apartment
- Three bedrooms
- 1,301sqft of internal space
- Huge wrap-around balcony
- Additional private roof terrace
- Furnished
- Concierge
- Residents gym and pool/spa

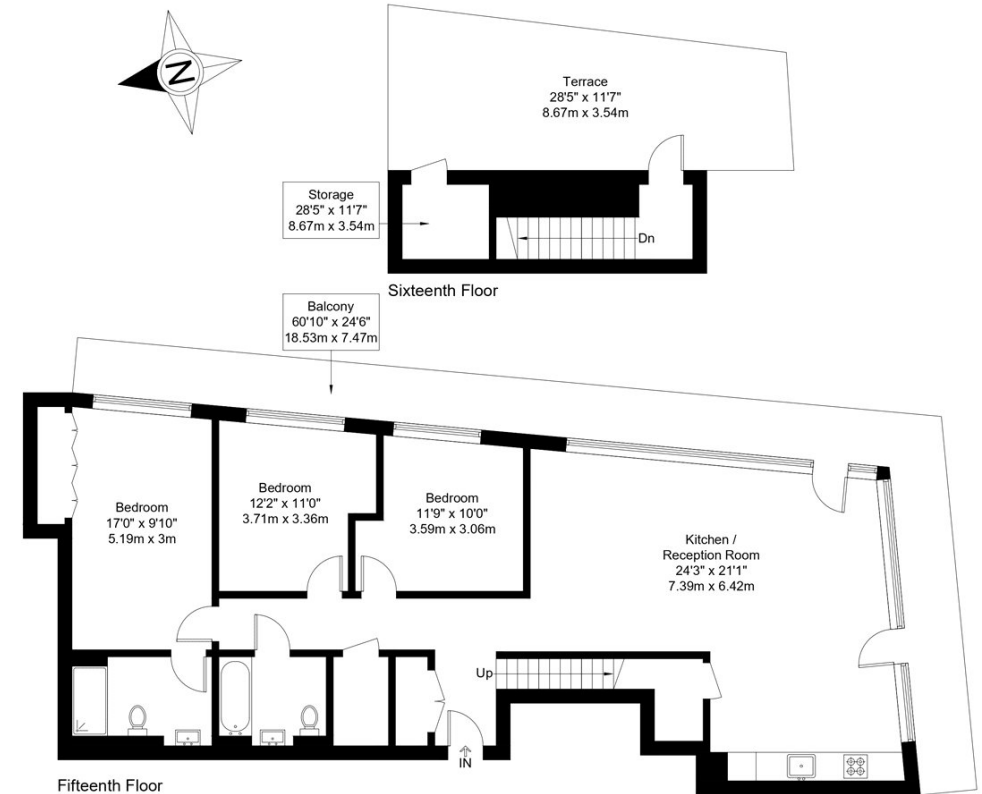
## Hope Street, E14

Approx Gross Internal Area = 120.9 sq m / 1301 sq ft

Balcony = 29.7 sq m / 320 sq ft

Terrace = 26 sq m / 280 sq ft

Total = 176.6 sq m / 1901 sq ft



The Floor plan is not to scale and measurements and areas shown are approximate and therefore should be used for illustrative purposes only. The plan has been prepared in accordance with the RICS code of Measuring Practice and whilst we have confidence in the information produced it must not be relied on. Maximum lengths and widths are represented on the floor plan. If there is any aspect of particular importance, you should carry out or commission your own inspection of the property.

Copyright © BleuPlan



