



Jacquard Point, 5 Tapestry Way, E1 2FQ

Price:
£ 475,000

Jacquard Point, 5 Tapestry Way, E1 2FQ

Price: £ 475,000 1 bedroom house

[View Property](#)

OVERVIEW

Set on the 4th floor of The Silk District, one of Whitechapel's most sought-after modern developments, this beautifully finished one-bedroom apartment offers high-specification living in a prime Zone 2 location.

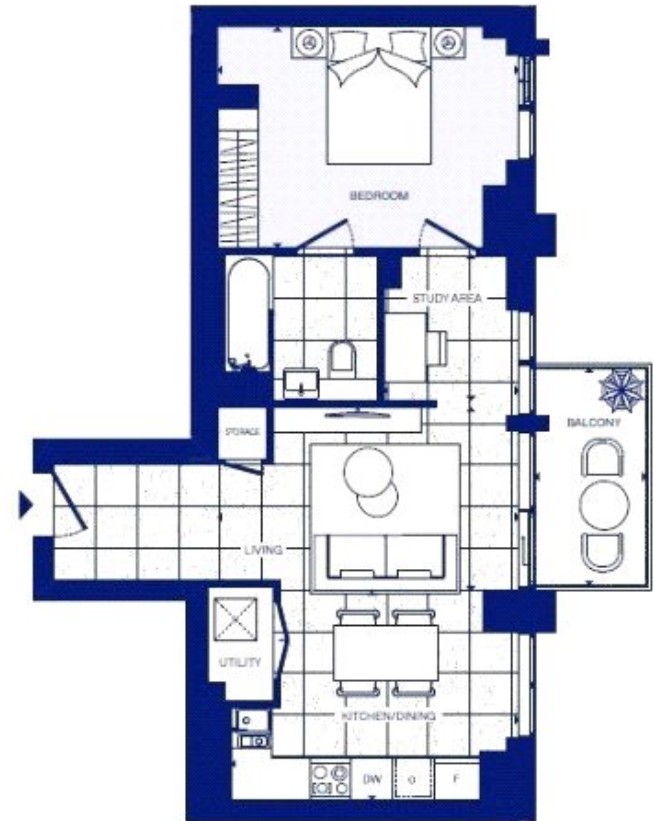
The apartment has been thoughtfully designed with a strong emphasis on quality and detail, featuring stylish terrazzo-effect tiling to the living areas and bathrooms, a contemporary kitchen with natural oak-effect cabinetry and integrated appliances, and a spacious double bedroom with built-in wardrobes. The overall finish is sleek, modern, and well suited to both owner-occupiers and investors.

KEY FEATURES

- Fourth-floor one-bedroom apartment within The Silk District, Whitechapel
- High-specification finish throughout with stylish terrazzo-effect tiling
- Contemporary kitchen with oak-effect cabinetry and integrated appliances
- Spacious double bedroom with built-in wardrobes and good storage
- Residents' facilities include gym, cinema room, and co-working lounge
- Landscaped gardens and central piazza within a well-designed development
- 24-hour concierge service with secure access for residents
- Moments from Whitechapel Station with Elizabeth Line connections

The Jacquard

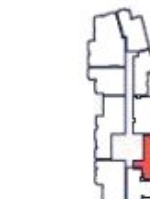
APARTMENTS: 03.06 | 04.13 | 05.06
06.05



EAST ELEVATION



MASTERPLAN



FLOORPLATE

1 BEDROOM Apartment

Total internal area	53 sq m	552 sq ft
LIVING/DINING	436cm x 264cm	14'3" x 8'8"
KITCHEN	416cm x 302cm	13'6" x 9'11"
BEDROOM	436cm x 318cm	14'3" x 10'5"
STUDY AREA	196cm x 211cm	6'5" x 6'11"
Total external area	5 sq m	53 sq ft
BALCONY	162cm x 313cm	5'4" x 10'3"

Floorplans and floorplates are for illustration of layouts only and are not to scale. All measurements given may vary within a tolerance of 5%.

Energy Performance Certificates

