



Jacquard Point, 5 Tapestry Way, E1 2FQ

Price:

£ 465,000





# Jacquard Point, 5 Tapestry Way, E1 2FQ

Price: £ 465,000 1 bedroom house

[View Property](#)

## OVERVIEW

Set within the highly regarded The Silk District at Jacquard Point, 5 Tapestry Way, Whitechapel, E1, this exceptional one-bedroom fourth-floor apartment offers contemporary city living in one of East London's most sought-after modern developments. Spanning approximately 552 sq ft, the property combines elegant design, premium amenities, and outstanding connectivity, making it an ideal choice for professionals, first-time buyers, or investors seeking strong long-term rental demand in a prime Zone 1 location.

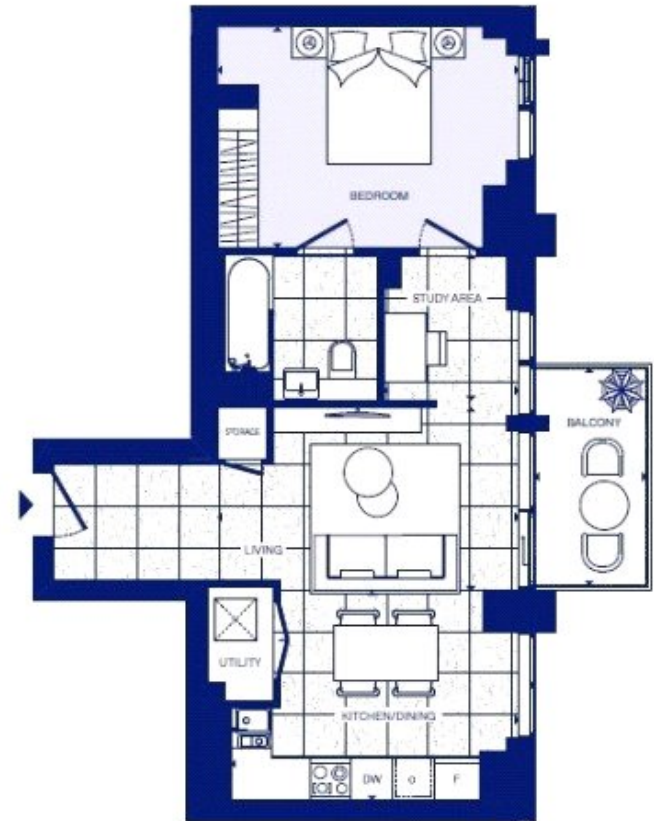
The apartment features a bright and well-proportioned open-plan living and kitchen area, enhanced by floor-to-ceiling glazing that fills the space with natural light. A private balcony provides valuable outdoor space, ideal for relaxing or entertaining while enjoying views over the surrounding development. The double bedroom is generously sized, complemented by a sleek, contemporary bathroom finished to a high specification, reflecting the quality expected within The Silk District.

## KEY FEATURES

- Fourth floor one-bedroom apartment
- Approx. 552 sq ft internal space
- Private balcony outdoor space
- Prestigious Silk District development
- Fully equipped gym and spin studio
- Private cinema room access
- Residents lounge and co-working space
- Landscaped rooftop gardens
- 24-hour concierge service
- Excellent Whitechapel transport links

*The Jacquard*

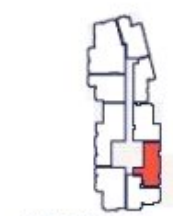
APARTMENTS: 03.06 | 04.13 | 05.06  
06.05



EAST ELEVATION



MASTERPLAN



FLOORPLATE

1 BEDROOM Apartment

Total internal area	53 sq m	552 sq ft
LIVING/DINING	436cm x 264cm	14'3" x 8'8"
KITCHEN	416cm x 302cm	13'6" x 9'11"
BEDROOM	436cm x 319cm	14'3" x 10'5"
STUDY AREA	196cm x 211cm	6'5" x 6'11"
Total external area	5 sq m	53 sq ft
BALCONY	162cm x 313cm	5'4" x 10'3"

Floorplans and floorplates are for illustration of layouts only and are not to scale. All measurements given may vary within a tolerance of 5%.

Energy Performance Certificates

