



Jack Clow Road, Stratford, E15 3AS

Price:
£ 1,300 /pcm

Jack Clow Road, Stratford, E15 3AS

Price: £ 1,300 /pcm1 bedroom house

[View Property](#)

OVERVIEW

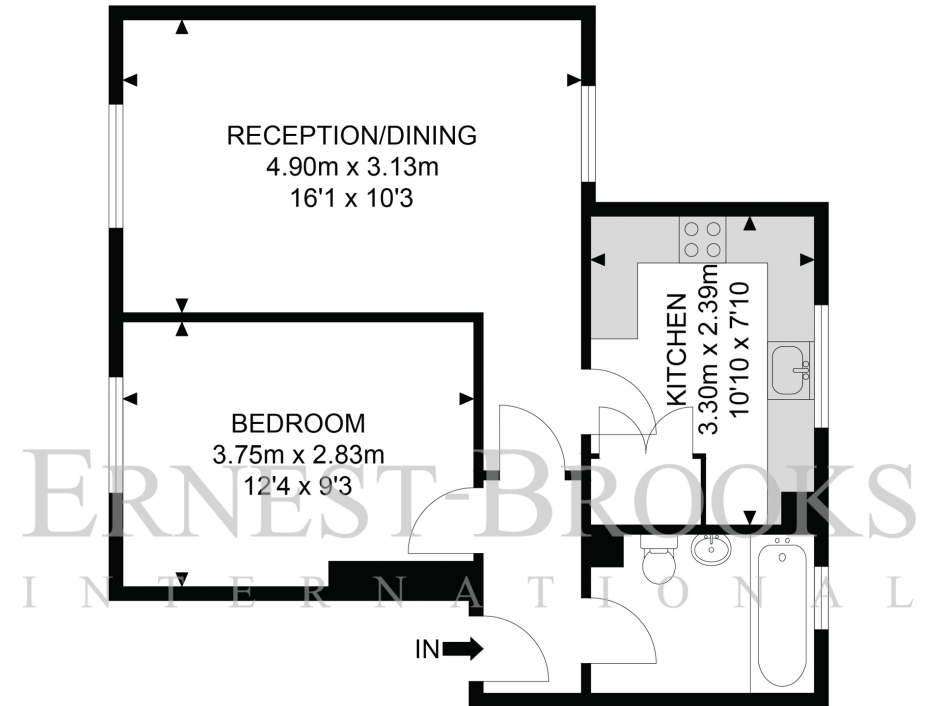
*AVAILABLE NOW! A well finished one bedroom apartment, benefitting from being moments away from West Ham Station. The apartment is available unfurnished.

This property would make an ideal first time investment purchase. Comprising of a large, family bathroom with plush white fittings. The bedroom is well sized with a large range of internal storage. Through to the kitchen with a range of base level units incorporating a stainless steel sink, drainer and additional space and plumbing for a washing machine. The focal point is the reception and dining area which benefits from an abundance of natural light due to both the south and north facing double glazed windows.

KEY FEATURES

- Available Now!
- One bedroom
- Ground floor flat
- Unfurnished
- Residents parking
- Superbly located
- 0.1 Miles from West Ham Station
- 0.2 Miles from Abbey Road DLR Station

Jack Clow Road



Ground Floor



APPROX. GROSS INTERNAL FLOOR AREA 469.30 SQ FT / 43.60 SQM

Whilst every attempt has been made to ensure the accuracy of the floor plan contained here, measurements of doors, windows, rooms and any other items are approximated and no responsibility is taken for any error, omission or mis-statement. This plan is for illustrative purposes only and should be used as such by any prospective purchaser. The service, system and appliances shown have not been tested and no guarantee as to their operability or efficiency can be given.

© SpacePhoto

Photography and Floor Plan

Energy Performance Certificates

