

**Horizons Tower, 1 Yabsley Street, E14 9BH**

Price:  
£ 400,000





# Horizons Tower, 1 Yabsley Street, E14 9BH

Price: £ 400,000 1 bedroom house

[View Property](#)

## OVERVIEW

Perched on the 6th floor of the prestigious Horizons Tower, this exceptional one-bedroom apartment offers a private balcony with sweeping vistas over Canary Wharf, Poplar Dock Marina, and the iconic City skyline.

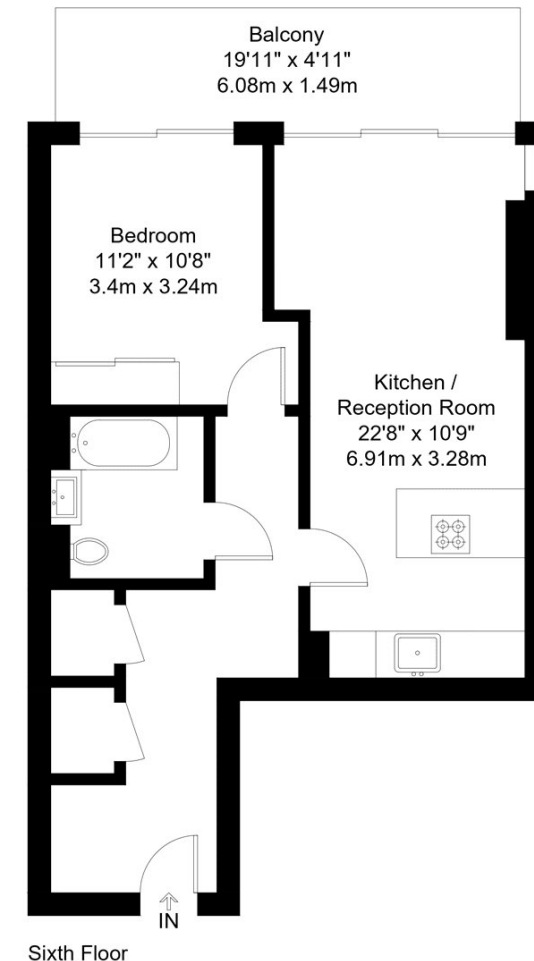
Exquisitely designed and fully furnished to the highest standard, the apartment seamlessly blends modern comfort with refined style. The contemporary open-plan kitchen boasts premium stone quartz worktops, a mirrored splashback, sleek high-gloss cabinetry, and fully integrated appliances. The elegant bathroom features Villeroy & Boch sanitaryware, bespoke storage, a large vanity mirror, and dual heated towel rails, creating a sophisticated retreat.

## KEY FEATURES

- Sixth-floor one-bedroom with private balcony and Canary Wharf & marina views
- Uninterrupted outlook across the City skyline and surrounding landmarks
- Fully furnished throughout to an exceptional high-quality standard
- Kitchen with quartz worktops, mirrored splashback and integrated appliances
- Bathroom with Villeroy & Boch fittings, storage and heated towel rails
- Resident amenities including gym, reception with fountain and 24-hour concierge
- Moments from Wood Wharf dining, shopping, wellness and entertainment options
- Excellent transport links: Blackwall DLR 0.3 mi; Canary Wharf stations 0.6 mi

# Horizons Tower, E14

Approx Gross Internal Area = 49.3 sq m / 531 sq ft  
Balcony = 9.1 sq m / 98 sq ft  
Total = 58.4 sq m / 629 sq ft



The Floor plan is not to scale and measurements and areas shown are approximate and therefore should be used for illustrative purposes only. The plan has been prepared in accordance with the RICS code of Measuring Practice and whilst we have confidence in the information produced it must not be relied on. Maximum lengths and widths are represented on the floor plan. If there is any aspect of particular importance, you should carry out or commission your own inspection of the property.  
Copyright © BleuPlan

Energy Performance Certificates



