



Hobart Building, 2 Wards Place, E14 9XJ

Price:

£ 4,100 /pcm

Hobart Building, 2 Wards Place, E14 9XJ

Price: £ 4,100 /pcm2 bedroom house

[View Property](#)

OVERVIEW

A stunning, middle floor two bedroom property located in the Hobart Building - part of the iconic Warden development in the heart of Canary Wharf. Encompassing well over 1,000 sqft with its own private terrace with dual aspect views.

Every resident is a member of The Warden Club, with access to exclusive first class facilities, including a private dining area, a rooftop observatory and bar, a magnificent gym with state-of-the-art equipment as well as a pool and yoga studio.

KEY FEATURES

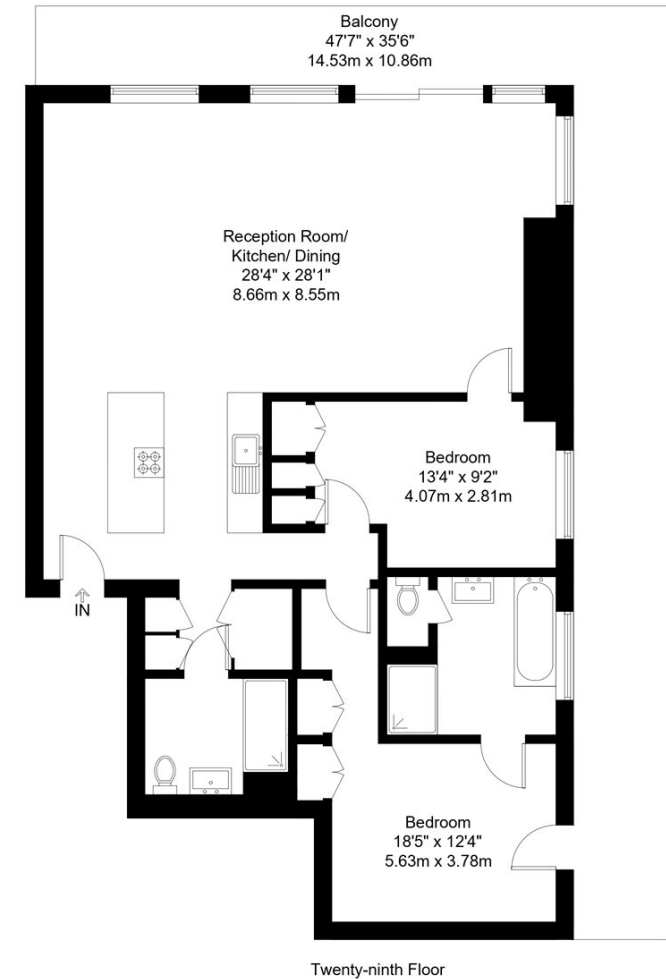
- Two bedroom
- Fully furnished
- Panoramic views
- Over 1,000sqft internal space
- Private terrace (401sqft)
- Access to Warden Club inc state of the art gym
- 53rd level Sky lounge inclusive of private dining and bar
- 25m athletic standard heated outdoor pool

Hobart Building, E14

Approx Gross Internal Area = 103.1 sq m / 1109 sq ft

Balcony = 40.1 sq m / 431 sq ft

Total = 143.2 sq m / 1541 sq ft



The Floor plan is not to scale and measurements and areas shown are approximate and therefore should be used for illustrative purposes only. The plan has been prepared in accordance with the RICS code of Measuring Practice and whilst we have confidence in the information produced it must not be relied on. Maximum lengths and widths are represented on the floor plan. If there is any aspect of particular importance, you should carry out or commission your own inspection of the property.
Copyright © BleuPlan

