



Hobart Building, 2 Wards Place, E14 9XJ

Price:
£ 2,999 /pcm

Hobart Building, 2 Wards Place, E14 9XJ

Price: £ 2,999 /pcm1 bedroom house

[View Property](#)

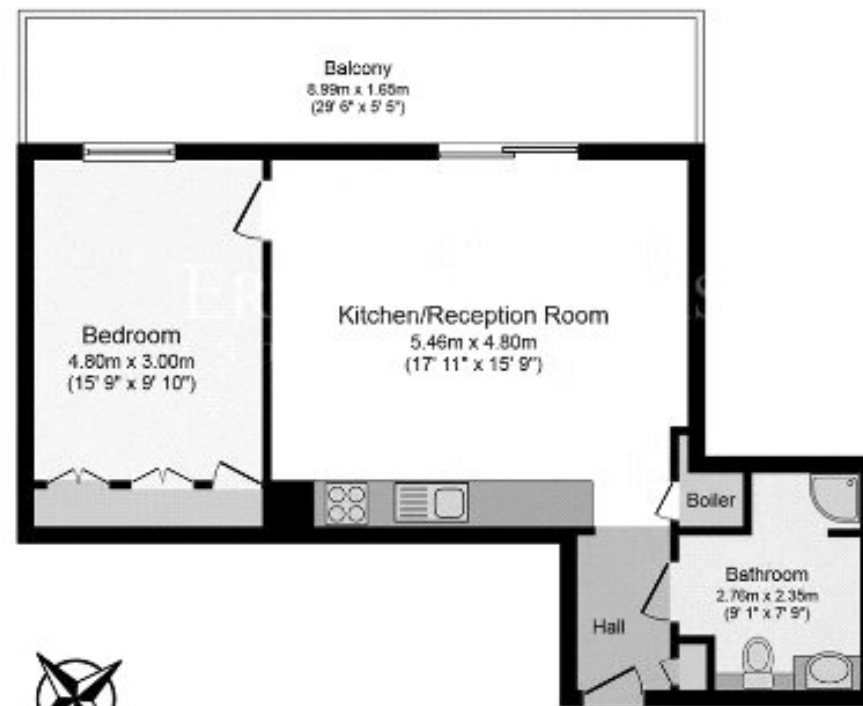
OVERVIEW

Available is this fully furnished one bedroom apartment, set in the Hobart Building - part of the iconic Warden development.

Situated on an upper floor and boasting over 550sqft with a spacious private balcony, benefiting from mesmeric east aspect views towards Canary Wharf and of the O2.

KEY FEATURES

- One bedroom
- Upper floor
- Private balcony
- 24 hour concierge
- Fully furnished
- Residents gymnasium
- Exclusive membership to The Warden Club
- 53rd level sky lounge inclusive of private dining & bar
- 25m athletic standard heated outdoor pool



Floor area 51.0 sq. m. (549 sq. ft.) approx

