



Hobart Building, 2 Wards Place, E14 9LE

Price:
£ 600,000

Hobart Building, 2 Wards Place, E14 9LE

Price: £ 600,000 1 bedroom house

[View Property](#)

OVERVIEW

Situated on the 19th floor of the highly regarded Hobart Building in Canary Wharf, this spacious one-bedroom apartment offers approximately 615 sq ft of well-proportioned internal living space, extending to an impressive 905 sq ft in total including a large wrap-around balcony. The high-floor position provides far-reaching panoramic views across the Canary Wharf skyline, with floor-to-ceiling windows allowing for excellent natural light throughout.

The apartment features a generous open-plan reception and kitchen area, ideal for modern living and entertaining. The living space opens directly onto the expansive wrap-around balcony, offering rare outdoor space for a Canary Wharf apartment and uninterrupted views across Docklands.

KEY FEATURES

- 19th floor one-bedroom apartment in the Hobart Building, Canary Wharf
- Approximately 615 sq ft internal, 905 sq ft total including balcony
- Large wrap-around private balcony with panoramic Docklands skyline views
- Bright open-plan living area with full-height floor-to-ceiling glazing
- Modern fitted kitchen with integrated appliances and sleek cabinetry
- Spacious double bedroom with built-in wardrobes and storage
- Residents' facilities include gym, swimming pool, spa, and cinema room
- 24-hour concierge and excellent Canary Wharf transport connections

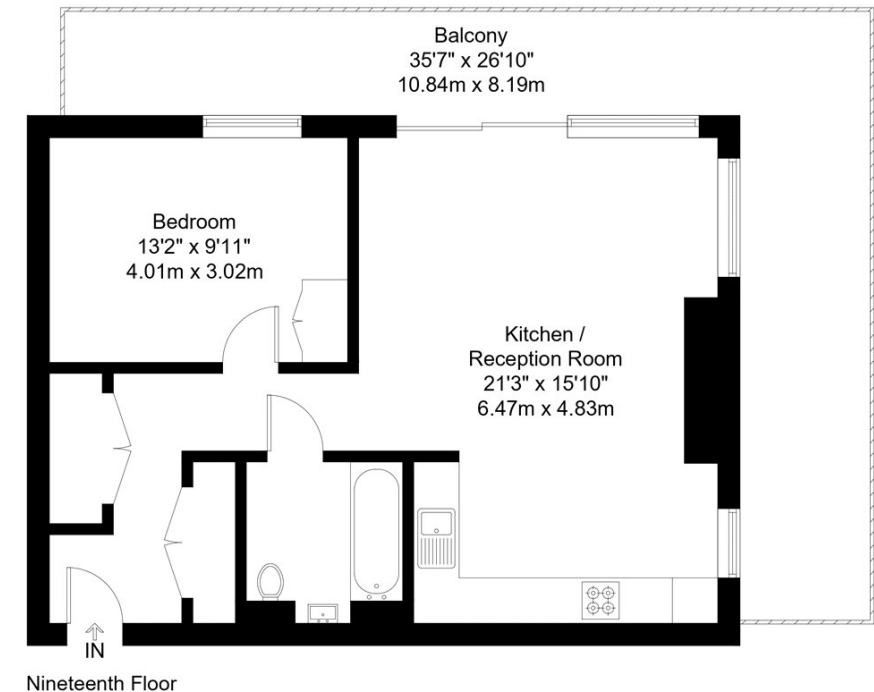
Hobart Building, E14

Approx Gross Internal Area = 57.1 sq m / 615 sq ft

Balcony = 27 sq m / 291 sq ft

Total = 84.1 sq m / 906 sq ft

EBI



The Floor plan is not to scale and measurements and areas shown are approximate and therefore should be used for illustrative purposes only. The plan has been prepared in accordance with the RICS code of Measuring Practice and whilst we have confidence in the information produced it must not be relied on. Maximum lengths and widths are represented on the floor plan. If there is any aspect of particular importance, you should carry out or commission your own inspection of the property.

Copyright @ BleuPlan

Energy Performance Certificates

