



Hampton Tower, 75 Marsh Wall, E14 9LW

Price:
£ 550,000

Hampton Tower, 75 Marsh Wall, E14 9LW

Price: £ 550,000 1 bedroom house

[View Property](#)

OVERVIEW

Set on the 11th floor of the highly regarded Hampton Tower, this well presented one bedroom apartment enjoys uninterrupted water views and is offered to the market chain free, making it an ideal purchase for both owner occupiers and investors.

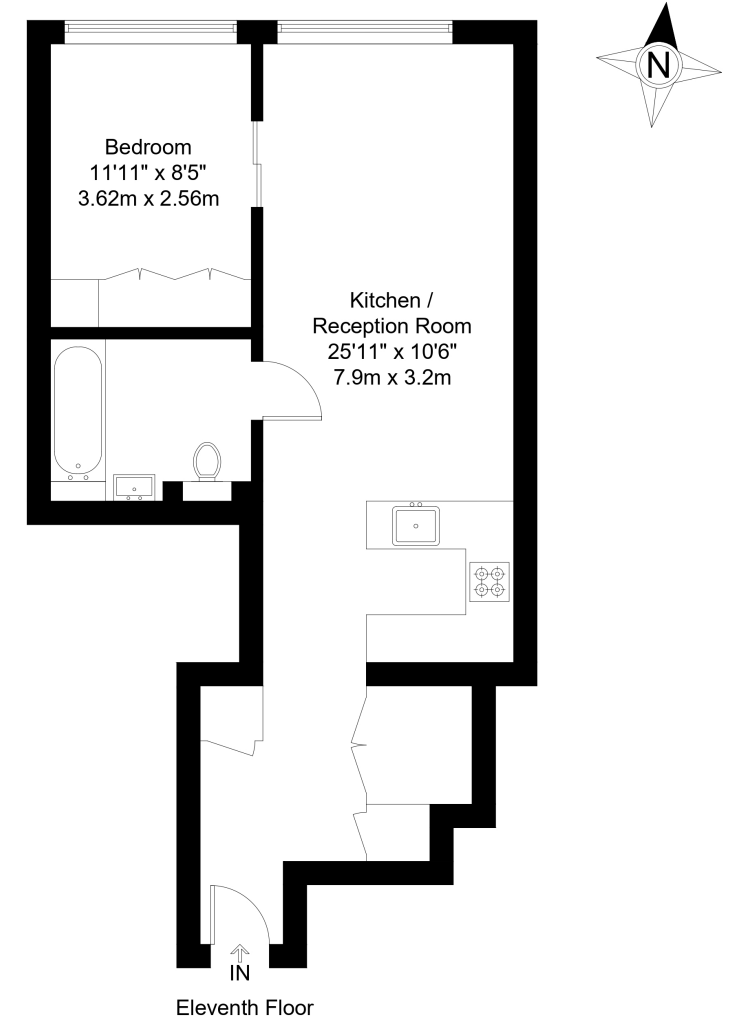
The apartment features a bright and well proportioned open plan living and dining area with large windows framing the water outlook, creating a strong sense of space and natural light throughout. The modern kitchen is neatly integrated and well suited to everyday living and entertaining. The double bedroom is generously sized, while the bathroom is finished to a clean, contemporary standard.

KEY FEATURES

- One bedroom apartment set on the 11th floor
- Uninterrupted water views from principal rooms
- Bright open plan living and dining space
- Modern fitted kitchen with integrated appliances
- Generously sized double bedroom
- Contemporary bathroom with quality finishes
- Chain free sale for a straightforward purchase
- Prime Canary Wharf location close to transport

Hampton Tower, E14

Approx Gross Internal Area = 50.4 sq m / 543 sq ft



The Floor plan is not to scale and measurements and areas shown are approximate and therefore should be used for illustrative purposes only. The plan has been prepared in accordance with the RICS code of Measuring Practice and whilst we have confidence in the information produced it must not be relied on. Maximum lengths and widths are represented on the floor plan. If there is any aspect of particular importance, you should carry out or commission your own inspection of the property.
Copyright © BleuPlan

Energy Performance Certificates

