

ERNEST & BLOKS
INTERNATIONAL

Hallmark Court, 6 Ursula Gould Way, E14 7FX

Price:
£ 425,000

Hallmark Court, 6 Ursula Gould Way, E14 7FX

Price: £ 425,000 2 bedroom house

[View Property](#)

OVERVIEW

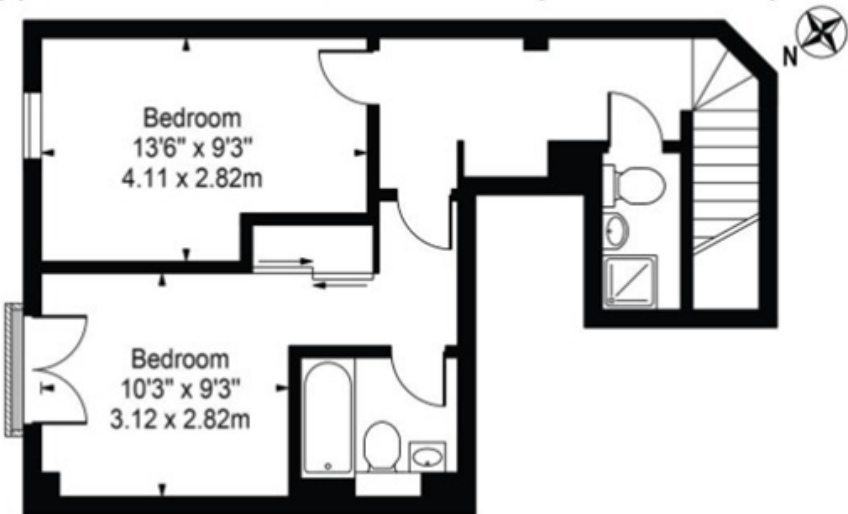
Enjoy canal side living in the superb two bedroom duplex apartments located in Hallmark Court on the Limehouse Cut, E14.

This stunning duplex is spread over the first and second floor and offers two bright double bedrooms, well presented open plan lounge with fully fitted kitchen, two stylish bathrooms with en suite.

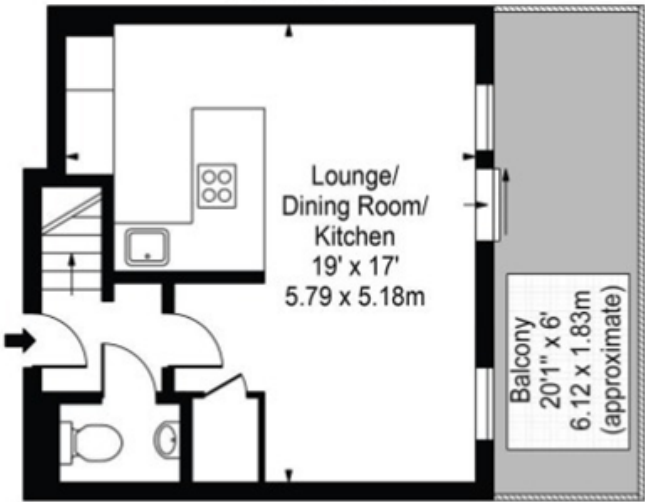
KEY FEATURES

- EWS1 Compliant
- Duplex apartment
- Two double bedrooms
- Two bathrooms
- 759 sqft
- Private balcony
- Resident parking
- 24h Concierge
- Dock Views
- Prime location for transport links

Approx. Gross Internal Area 759 Sq Ft - 70.51 Sq M



Second Floor



First Floor

Energy Performance Certificates

Energy Efficiency Rating		
	Current	Potential
Very energy efficient - lower running costs		
(92+) A		

