



Guthrum Court, 1 Cavendish Square, E16 2XN

Price:
£ 600,000

Guthrum Court, 1 Cavendish Square, E16 2XN

Price: £ 600,000 3 bedroom house

[View Property](#)

OVERVIEW

Set within the well-connected residential enclave of Guthrum Court at 1 Cavendish Square, Beckton, E16, this exceptional chain free three-bedroom duplex penthouse apartment offers an impressive 1,619 sq ft of contemporary living space. Designed for modern family life, the property combines generous proportions, a versatile layout, and private outdoor space, making it a rare offering in East London's rapidly evolving residential market.

Arranged over two levels, the duplex design provides a strong sense of space and separation between living and sleeping areas. The upper floor features a bright and expansive open-plan living and dining space, enhanced by large windows that allow natural light to flood the interior. The modern kitchen is seamlessly integrated, creating an ideal environment for both everyday living and entertaining. A private balcony extends from the living area, offering a valuable outdoor retreat for relaxation or dining.

KEY FEATURES

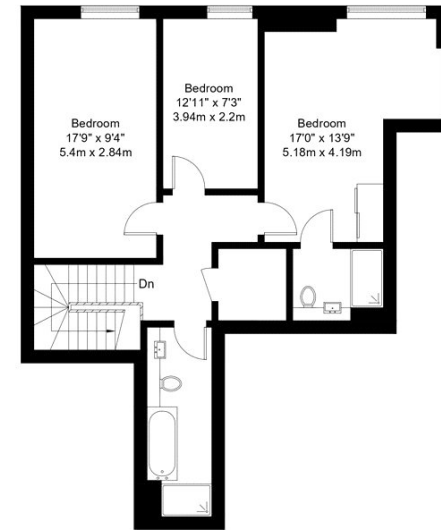
- Chain free three-bedroom duplex penthouse
- Approx. 1,619 sq ft internal space
- Spacious split-level modern layout
- Private balcony outdoor space
- Two contemporary bathrooms
- Secure allocated parking included
- Bright open-plan living area
- Excellent Beckton DLR connections
- Close to Canary Wharf access
- Strong family and investment appeal

Guthrum Court, E16

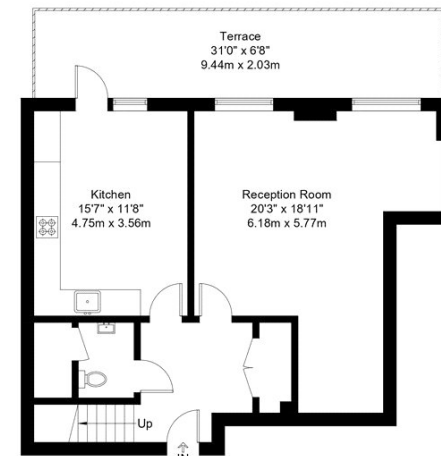
Approx Gross Internal Area = 131.2 sq m / 1412 sq ft

Terrace = 19.2 sq m / 207 sq ft

Total = 150.4 sq m / 1619 sq ft



Tenth Floor



Ninth Floor

The Floor plan is not to scale and measurements and areas shown are approximate and therefore should be used for illustrative purposes only. The plan has been prepared in accordance with the RICS code of Measuring Practice and whilst we have confidence in the information produced it must not be relied on. Maximum lengths and widths are represented on the floor plan. If there is any aspect of particular importance, you should carry out or commission your own inspection of the property.

Copyright © BleuPlan

Energy Performance Certificates

