



Guild House, 393 Rotherhithe New Road, SE16 3FN

Price:

£ 2,300 /pcm

Guild House, 393 Rotherhithe New Road, SE16 3FN

Price: £ 2,300 /pcm2 bedroom house

[View Property](#)

OVERVIEW

Available February is this furnished two double bedroom luxury duplex apartment located within the prestigious Bermondsey Works, SE16.

This exclusive duplex apartment is enviously situated on the 5th floor and enjoys dual aspect views east and south with expansive views towards the Canary Wharf skyline. The apartment comprises a well-appointed lounge/dining area with kitchen space featuring inbuilt appliances, two double bedrooms, two bathrooms and storage space throughout. There is also a large private balcony.

KEY FEATURES

- Available February
- Two bedroom
- Duplex apartment
- Furnished
- Landscaped Gardens
- Walking Distance To Bermondsey Underground and South Bermondsey Overground
- Plethora Of Local Shops & Amenities

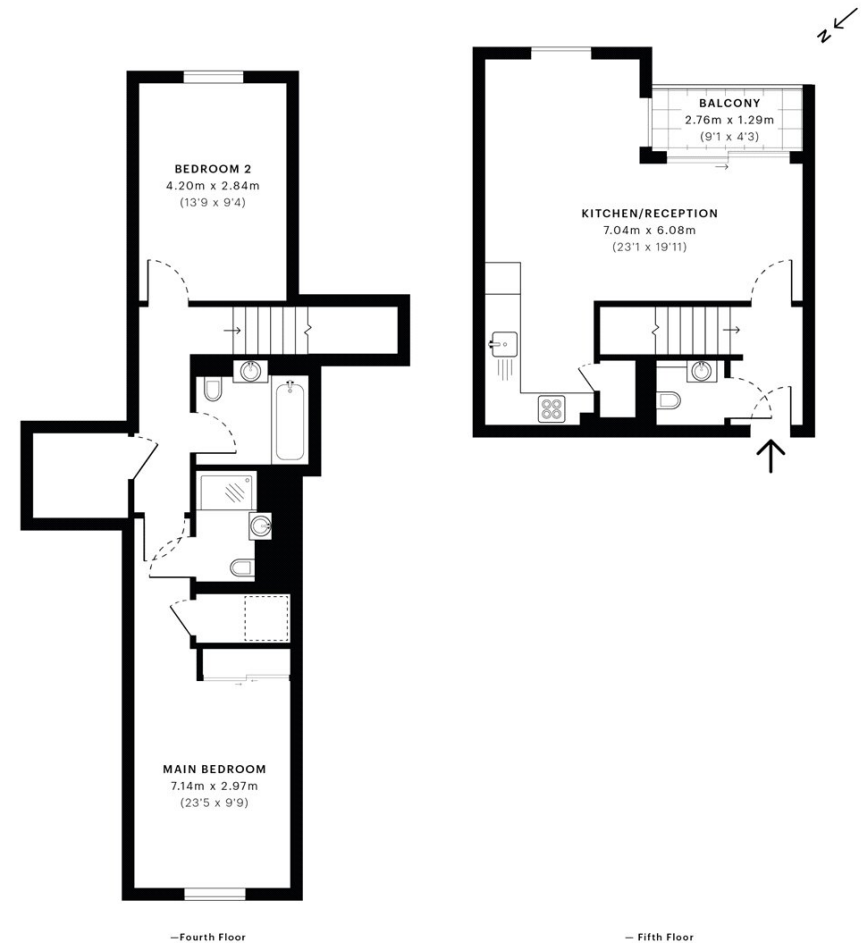


Guild House, SE16

CAPTURE DATE 22/01/2021 LASER SCAN POINTS 2,360,960

GROSS INTERNAL AREA

88.23 sqm / 949.70 sqft



GROSS INTERNAL AREA (GIA)
The footprint of the property
88.23 sqm / 949.70 sqft

NET INTERNAL AREA (NIA)
Excludes walls and external features.
Includes washrooms, restricted head height
80.59 sqm / 867.46 sqft

EXTERNAL STRUCTURAL FEATURES
Balconies, terraces, verandas etc.
3.47 sqm / 37.35 sqft

RESTRICTED HEAD HEIGHT
Limited use area under 1.5 m
0.77 sqm / 8.29 sqft



Spec Verified floor plans are produced in accordance with Royal Institution of Chartered Surveyors' Property Measurement Standards. Plots and gardens are illustrative only and excluded from all area calculations. Due to rounding, numbers may not add up precisely. All measurements shown for the individual room lengths and widths are the maximum points of measurements captured in the scan.

IPMS 3B RESIDENTIAL 88.41 sqm / 951.64 sqft
IPMS 3C RESIDENTIAL 84.99 sqm / 914.82 sqft

SPEC ID: 6006dc52b8f2ea0dc58bce8c

