



Grove Court, 24 Grove End Road, NW8 9EP

Price:
£ 5,500 /pcm

Grove Court, 24 Grove End Road, NW8 9EP

Price: £ 5,500 /pcm2 bedroom house

[View Property](#)

OVERVIEW

Ascending to the third floor, a sophisticated setting for city living unfolds. Parquet flooring sweeps through a stylish reception space, its neutral canvas elevated by attention to detail and considered design. Positioned by a large bay window, two armchairs offer views across the leafy streets below, while a large leather sofa makes the most of the room's centrepiece – an ornate feature fireplace. Crowned by a trio of glass pendant lights, a mirrored table brings aesthetic flair to dining.

Through to the kitchen, an uplifting culinary setting is crafted with indulgent tones and textures. A gold-toned splashback casts warm light across smooth stone worktops, while sleek black cabinets create contrast. Two AEG ovens and integrated appliances make cooking effortless.

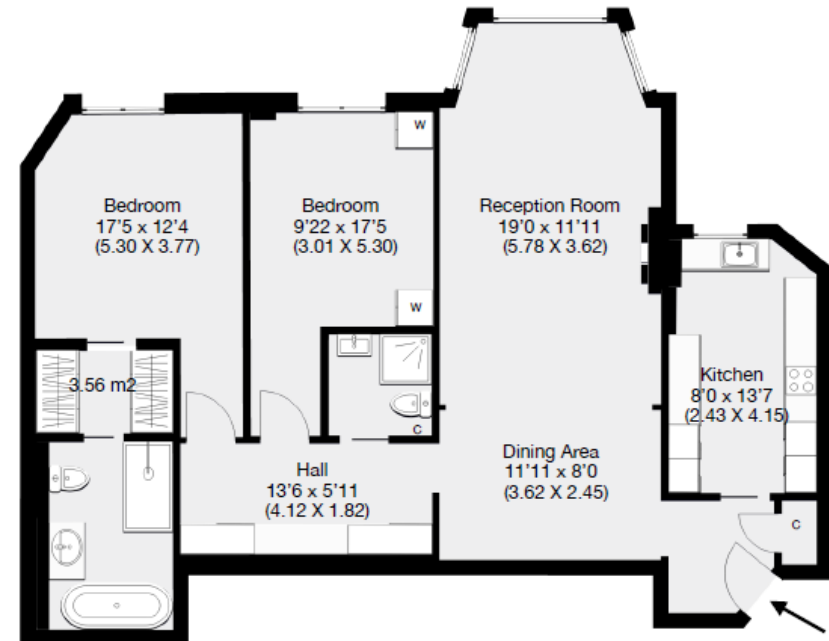
KEY FEATURES

- Two bedroom
- Two bathroom
- Dinning room/Reception Room
- Walk in wardrobe
- Emmaculately furnished
- Over 1000 sq ft
- Proximity to Regents Park



Grove Court, London, NW8

Approximate Gross Internal Area 95.6 sqm / 1029 sqft



Third Floor

