



**Gateway Tower, 28 Western Gateway, E16 1YL**

Price:  
£ 420,000





## Gateway Tower, 28 Western Gateway, E16 1YL

Price: £ 420,000 1 bedroom house

[View Property](#)

### OVERVIEW

A beautifully presented one-bedroom apartment set within Gateway Tower, offering contemporary living in a prime Docklands location. This stylish home features a bright open-plan kitchen and reception area that opens onto a private balcony with impressive views toward the O2 and Royal Victoria Dock. The spacious double bedroom includes bespoke fitted wardrobes, complemented by a modern family bathroom finished to a high standard.

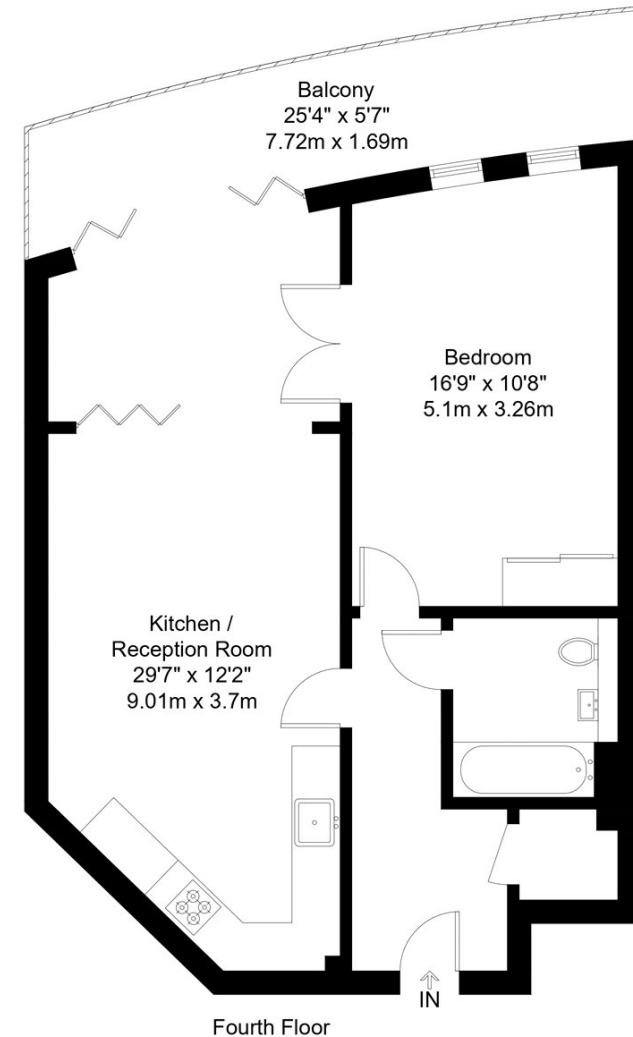
Gateway Tower enjoys an excellent position moments from the vibrant Royal Victoria Docks, where residents can enjoy a selection of cafés, restaurants and waterfront amenities. Transport connections are exceptional, with Royal Victoria and Custom House DLR stations, the Elizabeth Line and Canning Town (Jubilee Line) all within easy walking distance, providing fast and convenient access across London.

### KEY FEATURES

- One bedroom
- One bathroom
- Fourth floor
- 602 internal square feet
- Large balcony
- Unobstructed views over the O2
- 24 -hr concierge Close proximity to Custom House Elizabeth Line

## Gateway Tower, E16

Approx Gross Internal Area = 55.9 sq m / 602 sq ft  
Balcony = 13.2 sq m / 142 sq ft  
Total = 69.1 sq m / 744 sq ft



The Floor plan is not to scale and measurements and areas shown are approximate and therefore should be used for illustrative purposes only. The plan has been prepared in accordance with the RICS code of Measuring Practice and whilst we have confidence in the information produced it must not be relied on. Maximum lengths and widths are represented on the floor plan. If there is any aspect of particular importance, you should carry out or commission your own inspection of the property.  
Copyright © BleuPlan

Energy Performance Certificates



