

ERNEST-BROOKS
INTERNATIONAL

Finn House, Bevenden Street, N1 6BL

Price:
£ 420,000

Finn House, Bevenden Street, N1 6BL

Price: £ 420,000 2 bedroom house

[View Property](#)

OVERVIEW

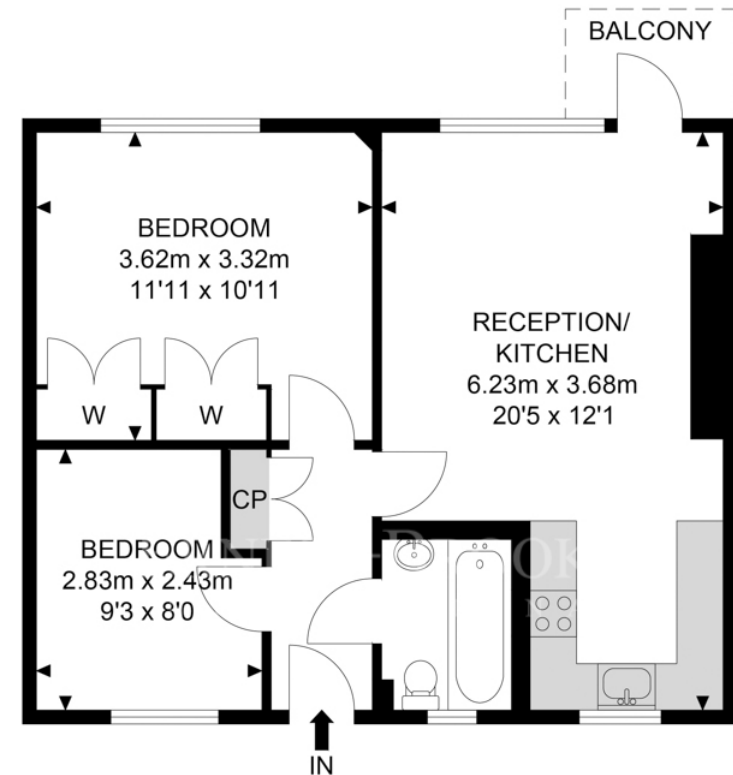
Offered to the market is this impressive two bedroomed 1940s mansion block which has been refurbished to a high modern standard.

Benefitting from a private south facing balcony with enviable views over the city of London and having been rewired completely with a miniature circuit board and decorative light fittings throughout.

KEY FEATURES

- Two Bedooms
- Fouth Floo
- Totally Refubished
- Pivate Paking
- Complete Rewiing
- Bathstoe Fitted bathoom
- New Wen Fitted Kitchen
- Bosh Appliances
- Vacant Possesion
- Pivate Balcony

Finn House



4th Floor



APPROX. GROSS INTERNAL FLOOR AREA 496.21 SQ FT / 46.10 SQM
APPROX. GROSS EXTERNAL FLOOR AREA 23.68 SQ FT / 2.20 SQM

Whilst every attempt has been made to ensure the accuracy of the floor plan contained here, measurements of doors, windows, rooms and any other items are approximated and no responsibility is taken for any error, omission or mis-statement. This plan is for illustrative purposes only and should be used as such by any prospective purchaser. The service, system and appliances shown have not been tested and no guarantee as to their operability or efficiency can be given.

© SpacePhoto

Photography and Floor Plan

Energy Performance Certificates

