

ERNEST BROOKS
INTERIOR

Ferguson Close, Isle of Dogs, E14 3SH

Price:
£ 325,000

Ferguson Close, Isle of Dogs, E14 3SH

Price: £ 325,000 1 bedroom house

[View Property](#)

OVERVIEW

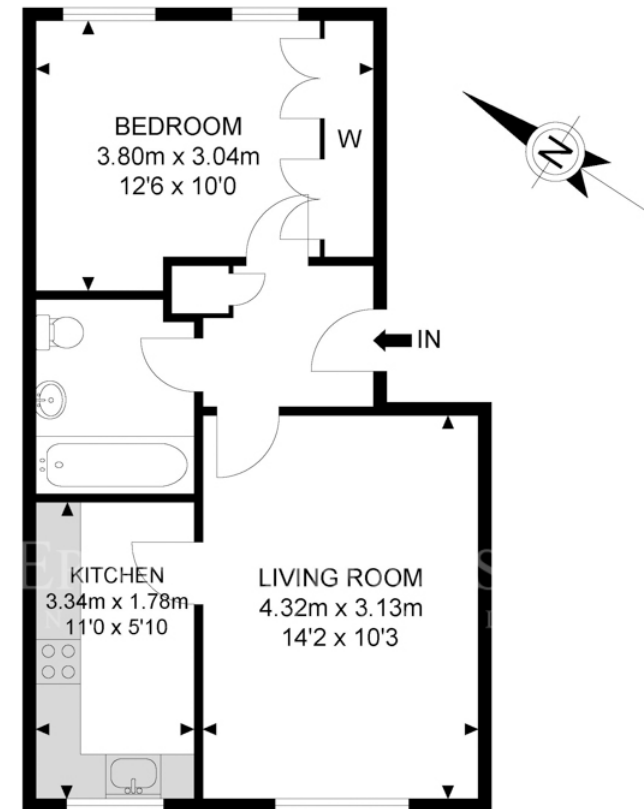
Stunning third floor, one bedroom apartment set in the highly sought after Ferguson Close.

Well-presented throughout, this superb apartment boasts a spacious, wooden floor reception room with exquisite south west facing views of the river Thames. The fully fitted, modern kitchen has a glossy white finish and offers the same spectacular view.

KEY FEATURES

- Private development
- Third floor
- One double bedroom
- Spacious reception room
- Modern kitchen
- Sleek bathroom
- River Thames views
- Parking
- Prime Canary Wharf location
- Mudchute DLR just minutes away

Ferguson Close



3rd Floor



APPROX. GROSS INTERNAL FLOOR AREA 413.33 SQ FT / 38.40 SQM

Whilst every attempt has been made to ensure the accuracy of the floor plan contained here, measurements of doors, windows, rooms and any other items are approximated and no responsibility is taken for any error, omission or mis-statement. This plan is for illustrative purposes only and should be used as such by any prospective purchaser. The service, system and appliances shown have not been tested and no guarantee as to their operability or efficiency can be given.

© SpacePhoto

Photography and Floor Plan

Energy Performance Certificates

