



**Fairbank House, 13 Beaufort Square, NW9 4FH**

Price:

£ 2,450 /pcm

# Fairbank House, 13 Beaufort Square, NW9 4FH

Price: £ 2,450 /pcm2 bedroom house

[View Property](#)

## OVERVIEW

Situated within the sought-after Fairbank Apartments at Beaufort Park, this beautifully presented two bedroom, two bathroom apartment offers contemporary living in one of North West London's most established residential developments. Positioned on a mid floor the property combines bright open-plan interiors with private outdoor space and access to an exceptional range of resident facilities.

The apartment features a spacious reception and dining area with floor-to-ceiling windows, a sleek fully integrated kitchen, two generously sized double bedrooms and two modern bathrooms, including an en-suite to the principal bedroom. A private balcony overlooks the landscaped communal gardens, creating a peaceful setting ideal for both relaxing and entertaining.

## KEY FEATURES

- Mid floor apartment with balcony
- Two spacious double bedroom layout
- Two luxury modern fitted bathrooms
- Bright open-plan living and dining
- Fully integrated contemporary kitchen suite
- Landscaped communal gardens throughout development
- Exclusive residents spa and leisure
- Swimming pool, sauna and jacuzzi access
- Moments from Colindale Underground Station
- Furnished apartment within Beaufort Park

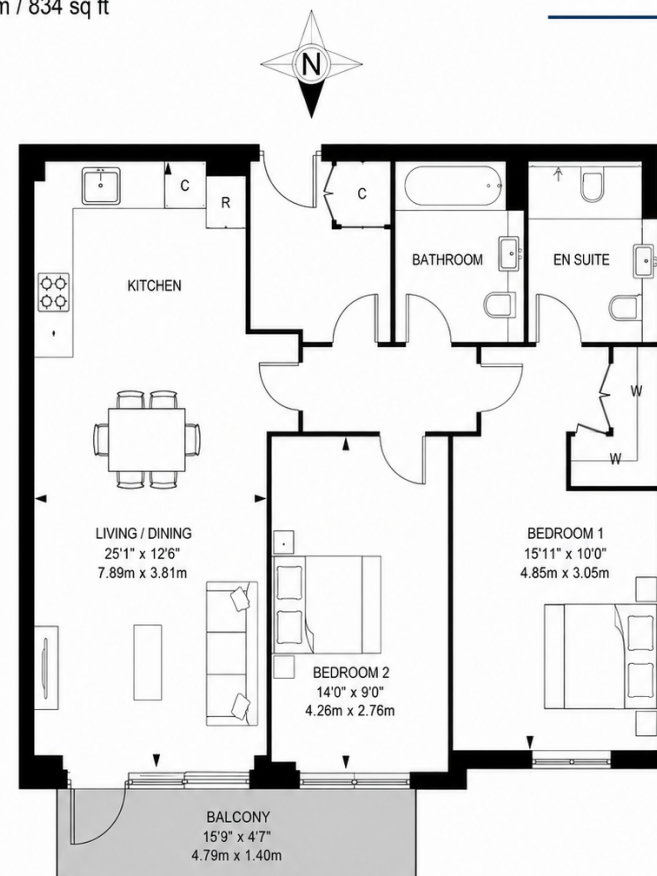
## FAIRBANK HOUSE

Approx Gross Internal Area = 70.2 sq m / 756 sq ft

Balcony = 7.3 sq m / 78 sq ft

Total = 77.5 sq m / 834 sq ft

# EBI



Third Floor

The Floor plan is not to scale and measurements and areas shown are approximate and therefore should be used for illustrative purposes only. The plan has been prepared in accordance with the RICS code of Measuring Practice and whilst we have confidence in the information produced it must not be relied on. Maximum lengths and widths are represented on the floor plan. If there is any aspect of particular importance, you should carry out or commission your own inspection of the property.

Copyright © BleuPlan

