



Elm Quay Court, 30 Nine Elms Lane, SW8 5DF

Price:

£ 3,500 /pcm

Elm Quay Court, 30 Nine Elms Lane, SW8 5DF

Price: £ 3,500 /pcm2 bedroom house

[View Property](#)

OVERVIEW

Discover riverside living at its finest in this stunning two-bedroom apartment on the third floor of the highly sought-after Elm Quay Court development, SW8.

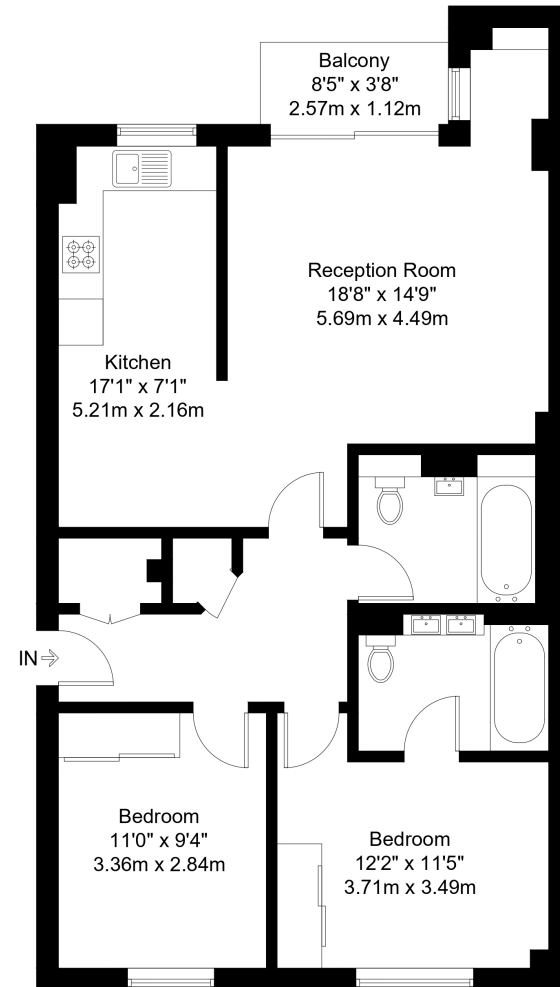
Boasting direct views of the River Thames and the city skyline, this modern residence offers a perfect blend of luxury and comfort.

KEY FEATURES

- Two bedrooms
- Two bathrooms (One En-suite)
- Private balcony overlooking the Thames
- Over 850 sqft
- Third floor
- Furnished
- Gym, swimming pool and sauna
- 24 hour concierge

Nine Elms Lane, SW8

Approx Gross Internal Area = 76.3 sq m / 821 sq ft
Balcony = 2.9 sq m / 31 sq ft
Total = 79.2 sq m / 853 sq ft



Third Floor

The Floor plan is not to scale and measurements and areas shown are approximate and therefore should be used for illustrative purposes only. The plan has been prepared in accordance with the RICS code of Measuring Practice and whilst we have confidence in the information produced it must not be relied on. Maximum lengths and widths are represented on the floor plan. If there is any aspect of particular importance, you should carry out or commission your own inspection of the property.
Copyright @ BleuPlan

