



**Dunnymans Road, Banstead, SM7 2AN**

Price:  
£ 550,000

# Dunnymans Road, Banstead, SM7 2AN

Price: £ 550,000 3 bedroom house

[View Property](#)

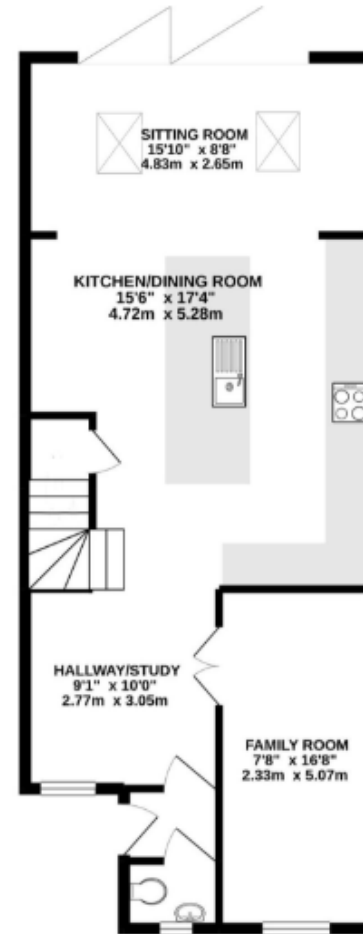
## OVERVIEW

A beautifully presented and extended three bedroom semi-detached home, offering stylish and practical family living in a sought-after location between Banstead High Street and the station.

This immaculate property has been fully refurbished to a high standard, featuring a spacious open-plan kitchen, dining and living area with integrated appliances, a central island, and bi-fold doors opening onto a low-maintenance landscaped garden. A separate family room and guest WC complete the ground floor.

## KEY FEATURES

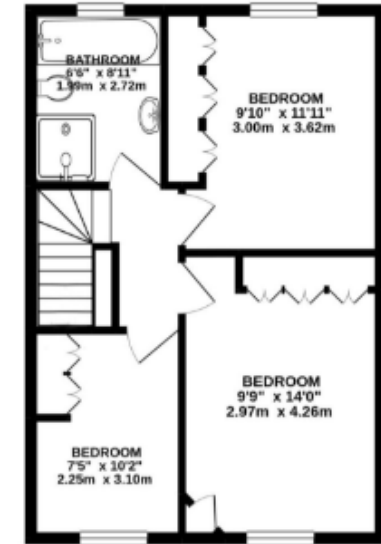
- Three bedroom semi-detached house
- Fully refurbished and extended
- Large open-plan kitchen/living/dining space
- Stylish island with breakfast bar and integrated appliances
- Separate family room and downstairs W/C
- Bi-fold doors leading onto landscaped rear garden
- Modern four-piece family bathroom with walk-in shower
- Off-street parking for two cars
- Moments from Banstead High Street and Station
- Excellent school catchment and road access to A217 and M25



GROUND FLOOR

Dunnymans Road, Banstead  
INTERNAL FLOOR AREA (APPROX.)  
1150 sq ft/ 106.8 sq m

Garden extends to 30' (9.14m) approximately



FIRST FLOOR

