



Dorset House, Ram Quarter, 18 Ram Street, SW18 1UB

Price:
£ 2,950 /pcm

Dorset House, Ram Quarter, 18 Ram Street, SW18 1UB

Price: £ 2,950 /pcm2 bedroom house

[View Property](#)

OVERVIEW

This beautifully presented two-bedroom apartment blends contemporary design with practical elegance, set within the sought-after Ram Quarter development in SW18.

Positioned on the ground floor, both double bedrooms enjoy excellent natural light and built-in wardrobes. The spacious open-plan kitchen and reception room features premium Siemens appliances, stone worktops, and floor-to-ceiling windows leading onto a private terrace with views over landscaped residents' gardens. A sleek family bathroom with high-spec fittings completes the home.

KEY FEATURES

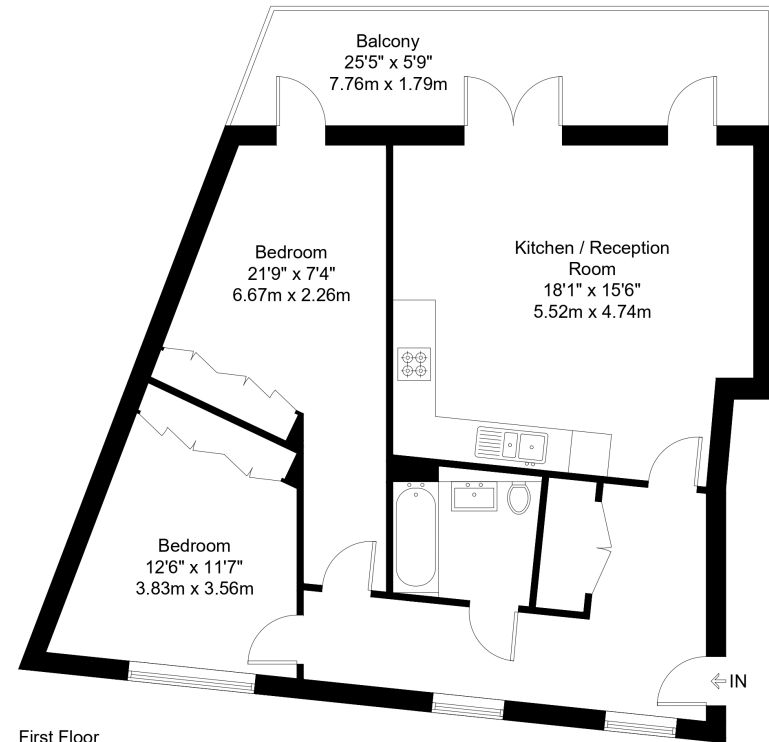
- Two double bedrooms with built-in wardrobes
- Private balcony with garden views
- Open-plan kitchen with Siemens appliances
- Underfloor heating in all rooms
- Modern bathroom with quality fittings
- 818 sq ft of internal living space
- 24-hour concierge and security service
- Moments from Wandsworth Town Station
- Set in the Ram Quarter with shops and cafés

Ram Street, SW18

Approx Gross Internal Area = 75.09 sq m / 808 sq ft

Balcony = 14.25 sq m / 153 sq ft

Total = 89.34 sq m / 961 sq ft



First Floor

The Floor plan is not to scale and measurements and areas shown are approximate and therefore should be used for illustrative purposes only. The plan has been prepared in accordance with the RICS code of Measuring Practice and whilst we have confidence in the information produced it must not be relied on. Maximum lengths and widths are represented on the floor plan. If there is any aspect of particular importance, you should carry out or commission your own inspection of the property.

Copyright © BleuPlan

