



**Derrick Gardens, London, SE7 7TA**

Price:

£ 330,000





# Derrick Gardens, London, SE7 7TA

Price: £ 330,000 2 bedroom house

[View Property](#)

## OVERVIEW

Set within the established residential setting of Derrick Gardens, SE7, this well-presented chain free two-bedroom ground floor apartment offers a rare opportunity to acquire a home with a private garden in a highly connected riverside location close to the Thames Barrier and Greenwich. Spanning approximately 623 sq ft, the property combines practical living space, excellent transport links, and strong long-term investment appeal in one of South East London's most strategically positioned neighbourhoods.

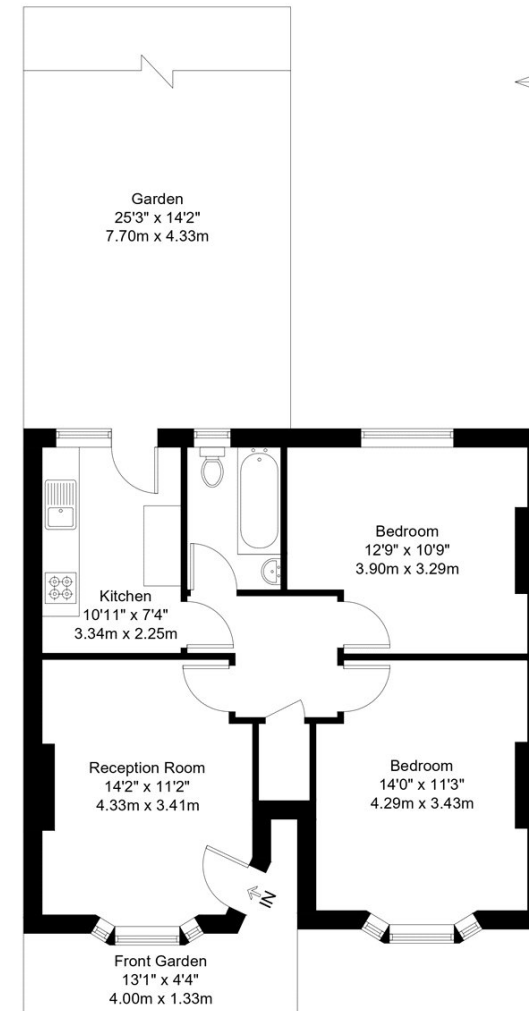
The apartment features a bright and functional layout, with a welcoming reception room that opens directly onto a private garden, creating a seamless indoor-outdoor living experience. The garden provides a valuable extension of the living space, ideal for relaxing, entertaining, or family use. Internally, the property comprises two well-proportioned bedrooms, a modern bathroom, and a practical kitchen, making it well-suited to both homeowners and investors.

## KEY FEATURES

- Chain free two-bedroom apartment
- Ground floor with private garden
- Approx. 623 sq ft internal space
- Bright reception opening to garden
- Well-proportioned double bedrooms
- Modern bathroom suite
- Close to Thames Barrier Park
- Excellent Greenwich transport links
- Fast access to Canary Wharf
- Strong investment and rental demand

# Derrick Gardens, SE7

Approx Gross Internal Area = 57.9 sq m / 623 sq ft



Ground Floor

The Floor plan is not to scale and measurements and areas shown are approximate and therefore should be used for illustrative purposes only. The plan has been prepared in accordance with the RICS code of Measuring Practice and whilst we have confidence in the information produced it must not be relied on. Maximum lengths and widths are represented on the floor plan. If there is any aspect of particular importance, you should carry out or commission your own inspection of the property.  
Copyright © BleuPlan

Energy Performance Certificates

